



PARTS MANUAL

MODEL: C-9V

SERIAL NO: 296-70101 to 296-76325

BAND SAWING MACHINE

MACHINE SPECIFICATIONS

MODEL SERIAL NO.

VOLTAGE CYCLE PHASE

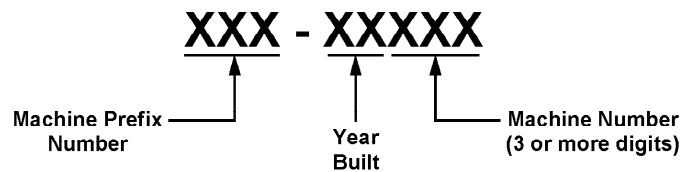
For your information and future reference, insert pertinent data concerning your machine in the spaces provided above. This information is stamped on the data plate attached to the machine frame.

Always specify model and serial numbers on all parts orders and correspondence concerning your machine. This will help avoid unnecessary delays and inconvenience during processing.

The specifications contained herein were in effect at the time this manual was approved for printing. The DoALL Company, whose policy is one of continuous product improvement, reserves the right, however, to change specifications or design at any time without notice and without incurring obligations.

How to read your serial number:

Example: 500-001234



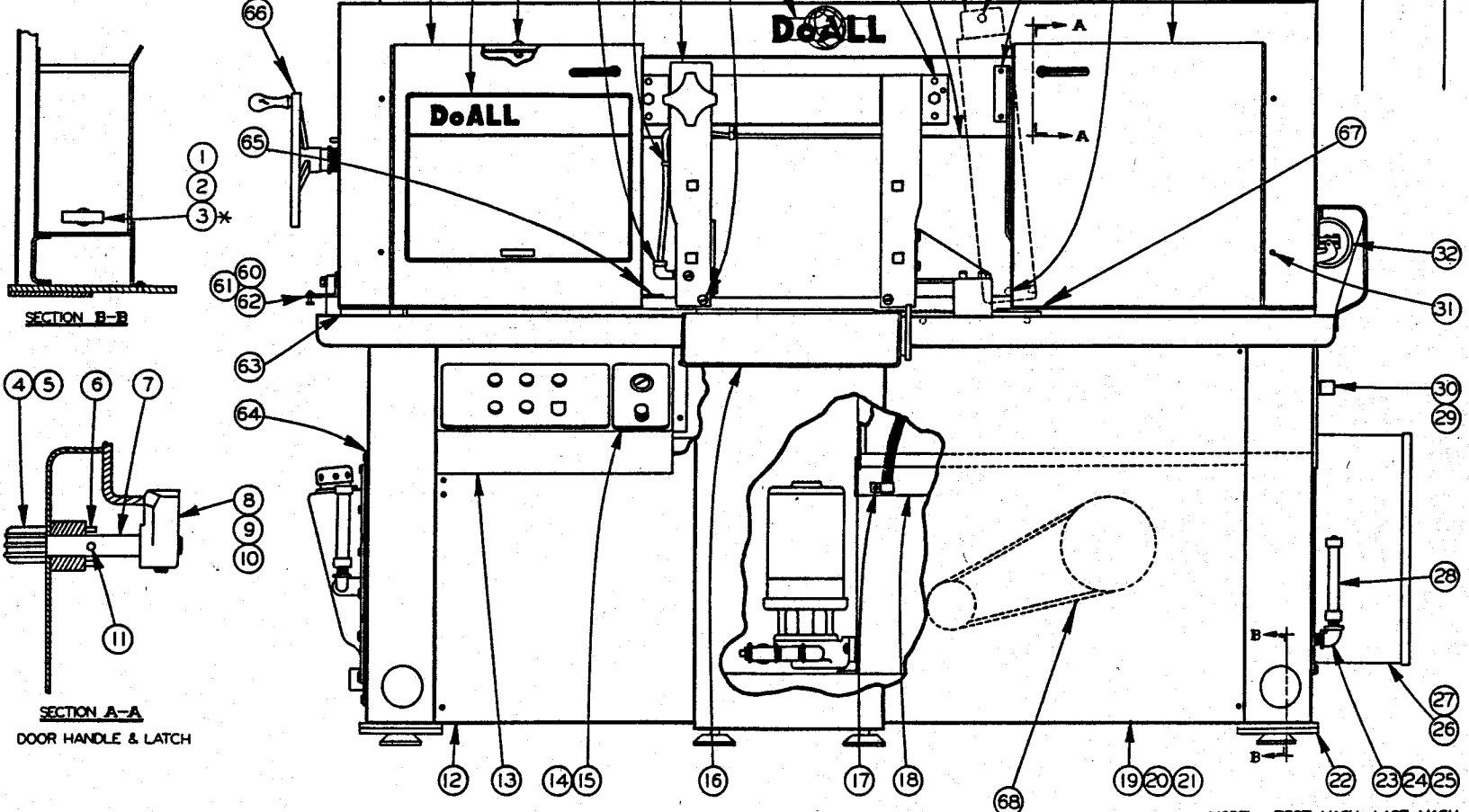
YOUR SERVICE REPRESENTATIVE:

FICHE NO E-7 CLASS Power Saw MODEL C-9V SERIAL NO. 296-70101 TO 296-76325

PAGE NO.	DESCRIPTION	FIRST SERIAL	LAST SERIAL	FRAME NO.		FICHE NO.
				DWG.	P.LIST	
PS-1-38	Final Ass'y.	ALL		A-3	A-4	
PS-4-83	Band Brush, Powered	ALL		A-5	A-6	
PS-4-59	Band Tension, Handwheel	ALL		A-7	A-8	
PS-9-32	Band Tension, w/Hyd. Cyl. (Attach.)	ALL		A-9	A-10	
PS-4-60	Bandwheel, Drive	ALL		A-11	A-12	
PS-4-59	Bandwheel, Idler	ALL		A-7	A-8	
PS-8-12	Control Panel, Electrical	ALL		A-13	A-14	
PS-9-28	Conveyor Ass'y., 5 & 10 Ft. (Attach.)	ALL		B-1	B-2	
PS-9-27	Conveyor Ass'y., 16" Motorized (Attach.)	ALL		B-3	B-4	
PS-6-11	Coolant Ass'y.	ALL		B-5	B-6	
PS-6-7	Coolant Pump	ALL		B-7	B-8	
PS-4-60	Drive Ass'y. Sheet 1 of 2	ALL		A-11	A-12	
PS-4-54	Drive Ass'y. Sheet 2 of 2	ALL		B-9	B-10	
PS-8-10	Electrical Ass'y.	ALL		B-11	B-12	
PS-7-91	Head Lift Cylinder	ALL		B-13	B-14	
PS-7-44	Hydraulic Ass'y.	ALL		C-1	C-2	
PS-7-44	Hydraulic Pump	ALL		C-1	C-2	
PS-7-46	Hydraulic Valve Sub-Ass'y.	ALL		C-3	C-4	
PS-8-103	Lamp	ALL		C-5	C-6	
PS-5-18	Saw Guide & Arms	ALL		C-7	C-8	
PS-7-80	Speed Change Cylinder, Drive	ALL		C-9	C-10	
PS-3-62	Stock Tray 36", w/Work Stop (Attach.)	ALL		C-11	C-12	
PS-9-123	Variable Vise Pressure (Attach.)	ALL		C-13	C-14	
PS-4-35	Variable Pulley, Drive	ALL		D-1	D-2	
PS-3-83	Vise and Base Ass'y.	ALL		D-3	D-4	
PS-3-83	Vise Clamp Handwheel	ALL		D-3	D-4	
PS-9-106	Vise Base w/Hyd. Vise (Attach.)	ALL		D-5	D-6	
PS-7-91	Vise Clamp Cylinders	ALL		B-13	B-14	
PS-9-105	Vise Base w/Swivel Jaws (Attach.)	ALL		D-7	D-8	
PS-9-107	Vise Base w/Swivel Jaw & Hyd. Vise (Attach.)	ALL		D-9	D-10	
PS-7-91	Vise Clamp Cylinder w/Swivel Jaws	ALL		B-13	B-14	
PS-6-11	Wash Down Hose (Attach.)	ALL		B-5	B-6	
PS-9-56	Work Height Selector (Attach.)	ALL		D-11	D-12	
PS-3-62	Work Stop (Attach.)	ALL		C-11	C-12	

NEW DRG.
S.W. 6-16-71
REVISIONS

* NOTE: SEE COOLANT DETAIL



PS-1-38

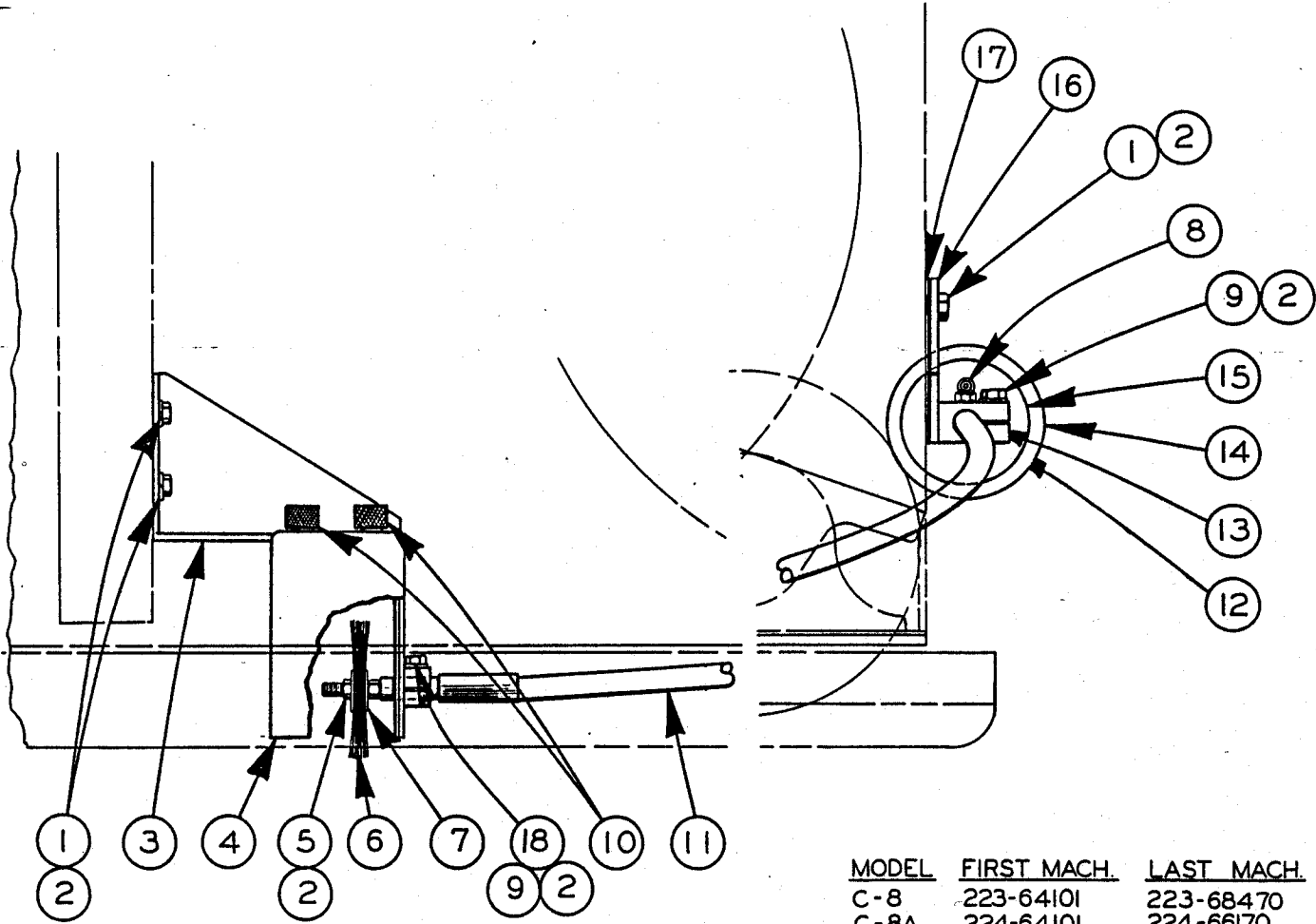
PRINTED IN USA

MODEL	FIRST MACH	LAST MACH
C - 9V	296 - 70101	296 - 76325
C - 9AV	297 - 70101	297 - 76194

FINAL ASSEMBLY

INDEX NO.	PART NO.	DESCRIPTION	UNITS PER ASS'Y
Ref.	501065	Final Ass'y C-9V	
Ref.	501256	Final Ass'y C-9AV	
1	3818	. Reducer Coupling.....	1
2	1912	. Pipe Nipple.....	1
3	20921	. Coolant Strainer (See Coolant Detail).....	1
4	34-01104	. Door Handle.....	3
5	4229	. Roll Pin.....	3
6	4227	. Roll Pin.....	6
7	101548	. Shaft.....	3
8	118019	. Door Latch.....	1
9	5-02101	. Latch.....	2
10	Comm.	. Screw, Soc. Set 1/4-20NC x 1/4".....	5
11	4231	. Roll Pin.....	3
12	400657	. Front Panel Weld't L.H.....	1
13	45768	. Box Weld't.....	1
14	Comm.	. Washer, Lock #8 Std.....	8
15	Comm.	. Screw, Rd. Hd. Mach. #8-32NC x 5/16".....	14
16	59024	. Stock Tray Ass'y (See Detail) (Used only on C-9AV).....	1
17	16560	. Hose Clamp.....	1
18	400950	. Coolant Tank Ass'y (See Detail).....	1
19	Comm.	. Screw, Rd. Hd. Mach. #10-24NC x 3/8".....	60
20	Comm.	. Washer, Lock #10 Std.....	55
21	400654	. Front Panel R.H. (Used on C-9AV).....	1
	49864	. Front Panel (Used on C-9V).....	1
22	500255	. Base Weld't.....	1
23	102917	. Pipe Nipple.....	1
24	35-4455	. Reducer Bushing.....	1
25	17-13515	. 90° Elbow.....	1
26	401918	. Elec. Ass'y (Used on C-9AV) (See Detail).....	1
	402037	. Elec. Ass'y (Used on C-9V) (See Detail).....	1
27	500165	. Elec. Diagram (Used on C-9AV).....	1
	402036	. Elec. Diagram (Used on C-9V).....	1
28	13886	. Oil Gauge Ass'y (See Hyd. Detail).....	1
29	47954	. Chip Drawer Weld't.....	1
Ref.	501576	. Chip Screen Ass'y.....	1
30	33302	. Screen.....	1
31	108921	. Bumper.....	2
32	56787	. Chip Brush Ass'y (See Detail).....	1
33	37227	. R. H. Door Weld't.....	1
34	117497	. Pin.....	1
35	Comm.	. Cotter Pin 1/8 x 1".....	2
36	48148	. Guard.....	1
37	108708	. Pin.....	1
38	108707	. Plate.....	1
39	46731	. Head Cylinder Sub-Ass'y (See Detail).....	1
40	117445	. Chip Deflector.....	1
41	35-445	. Dowel Pin.....	A. R.
42	Comm.	. Screw, Soc. Set 5/8-11NC x 1 1/4" Oval Pt.....	4
43	Comm.	. Washer 1/2 SAE.....	23
44	Comm.	. Screw, Hex. Hd. Cap 1/2-13NC x 2".....	2
45	Comm.	. Washer, Lock 1/2 Std.....	12
46	32035	. Name Plate.....	1
47	31859	. Needle Valve.....	1
48	1512	. "O"-Ring.....	1
49	59218	. Saw Guide Arm Ass'y (See Detail).....	1
50	17247	. Clamp.....	6
51	103316	. Barbed Insert.....	1
52	17-13521	. 1/4 NPT Strt. Elbow.....	1
53	108948	. Door Stop.....	1
54	101732	. Spacer.....	1
55	1019	. Washer.....	1
56	Comm.	. Screw, Truss Hd. Mach. #10-24NC x 3/4.....	1
57	402363	. Job Selector (Used on C-9AV).....	1
	402364	. Job Selector (Used on C-9V).....	1
58	37226	. L.H. Door Weld't.....	1
59	56756	. Head Weld't.....	1
60	117347	. Bracket.....	1
61	Comm.	. Nut, Hex. Jam 1/4-20NC.....	3
62	Comm.	. Screw, Hex. Hd. Cap 1/4-20NC x 1.....	3
63	116064	. Bumper.....	1
64	500162	. Hydraulic Ass'y (See Detail) (Used on C-9AV).....	1
	500257	. Hydraulic Ass'y (See Detail) (Used on C-9V).....	1
65	500921	. Vise Base Ass'y (See Detail) (C-9V).....	1
	59025	. Vise Base Ass'y (See Detail) (C-9AV).....	1
66	501058	. Bandwheel and Band Tension Ass'y (See Detail).....	1
67	36891	. Cylinder Support.....	2
68	501063	. Drive Assembly (See Detail).....	1
	48028	. Lamp Assembly (Not Shown) (See Detail).....	1

REVISIONS
1-4-68
S.W. 5-11-70
S.W. 1-21-72
SCL 11-29-73
S.W. 3-21-77
MC 102-80

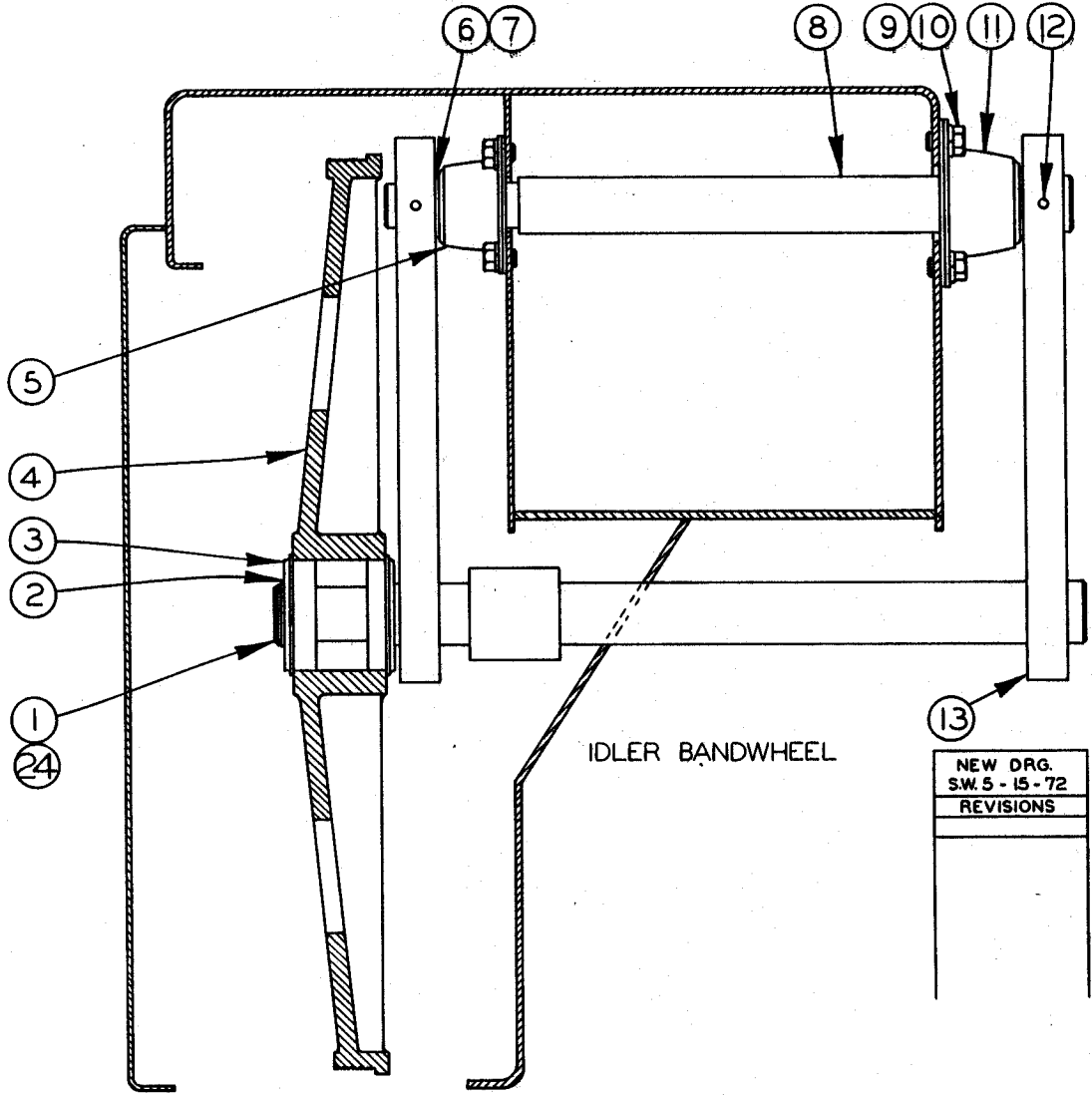


MODEL	FIRST MACH.	LAST MACH.
C-8	223-64101	223-68470
C-8A	224-64101	224-66170
C-9A	261-68101	261-72149
C-9	260-68101	260-71306
C-9V	296-70101	296-76325
C-9AV	297-70101	297-76194
C-1212M	371-77101	371-80179
C-1212A	372-77101	372-80192

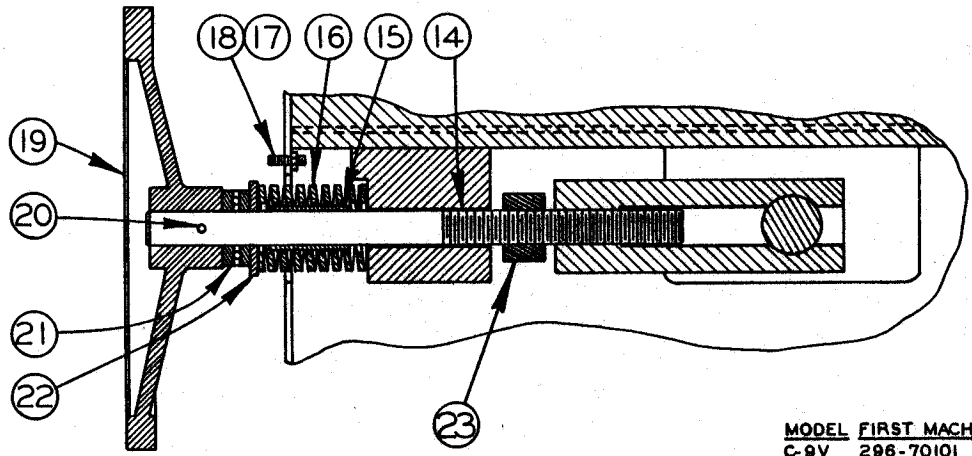
BAND BRUSH ASSEMBLY
(POWERED)

CHIP BRUSH ASSEMBLY

INDEX NO.	PART NO.	DESCRIPTION	UNITS PER ASS'Y
Ref.	56787	Chip Brush Assembly	
1	Comm.	. Screw, Hex. Hd. Cap 1/4-20NC x 1/2.....	1
2	Comm.	. Washer, Lock 1/4 Std.....	2
3	47969	. Chip Brush Bracket Weldment	1
4	33313	. Chip Brush Hood.....	1
5	Comm.	. Nut, Hex. 1/4-20NC.....	1
6	10983	. Wire Brush.....	1
7	12898	. Adaptor.....	2
8	11115	. Oil Hole Cover	2
9	Comm.	. Screw, Hex. Hd. Cap 1/4-20NC x 1.....	2
10	11-02401	. Thumb Screw.....	2
11	33333	. Right Flexible Shaft Assembly	1
12	100428	. Nut.....	1
13	100426	. Hub.....	1
14	102531	. Friction Wheel	1
15	33324	. Bracket Weldment (C-9 & C-9A)	Use
	39757	. Bracket Weldment (C-9V & C-9AV)	One
16	108790	. Spacer.....	1



NEW DRG.
SW. 5 - 15 - 72
REVISIONS



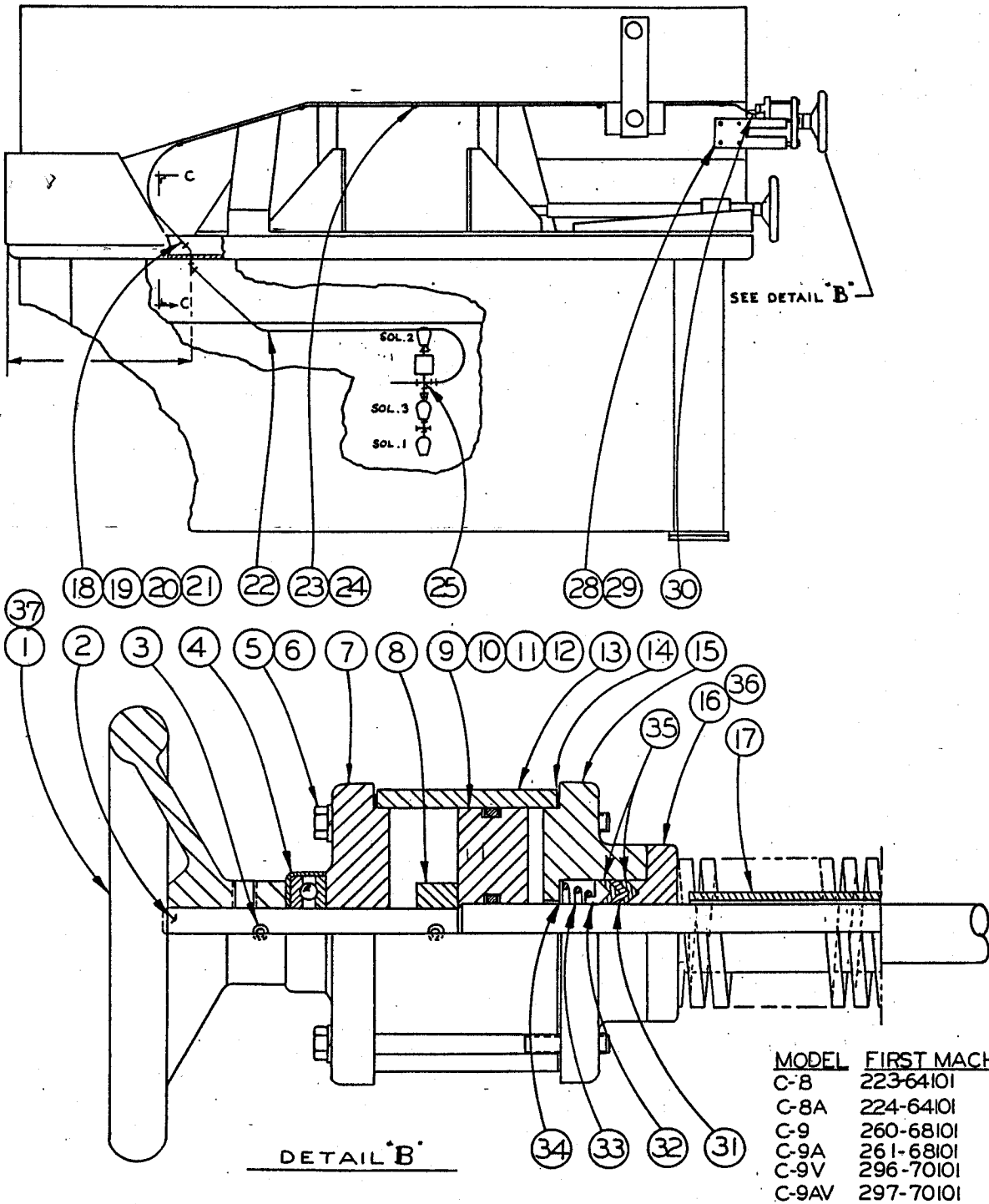
BAND TENSION ASSEMBLY

MODEL	FIRST MACH	LAST MACH.
C-9V	296-70101	296-76325
C-9AV	297-70101	297-76194

BANDWHEEL AND BAND TENSION ASSEMBLY

INDEX NO.	PART NO.	DESCRIPTION	UNITS PER ASS'Y
Ref.	501058	Bandwheel and Band Tension Assembly	
1	108200	. Retaining Ring.....	2
2	108199	. Washer.....	2
3	121121	. Ball Bearing.....	4
4	55795	. Band Wheel (Idler).....	1
5	109197	. Flange Bearing.....	1
6	10384	. Shim.....	A.R.
7	10385	. Shim.....	A.R.
8	33273	. Shaft.....	1
9	Comm.	. Screw, Hex. Hd. Cap 5/16-18NC x 1/2...	8
10	Comm.	. Washer, Lock 5/16 Std.....	10
11	109196	. Flange Bearing.....	1
12	100673	. Dowel Pin.....	6
13	56751	. Tail Wheel Yoke Weld't.....	1
14	31580	. Tail Wheel Screw.....	1
15	108748	. Tube.....	1
16	108750	. Spring.....	1
17	Comm.	. Screw, Soc. Set #10-24NC x 3/4.....	1
18	Comm.	. Nut, Hex. #10-24NC.....	1
19	31465	. Handwheel.....	1
20	4265	. Roll Pin.....	1
21	108749	. Bearing.....	1
22	109536	. Washer.....	1
23	119573	. Stop Collar.....	1
24	122652-122655	. Shim.....	A.R.
	101450	. Handle (Used only on C-9AV) (Not Shown)..	1

REVISIONS
8-16-67
S.W.1-21-70
S.W.5-11-72
S.C.L. 12-3-73

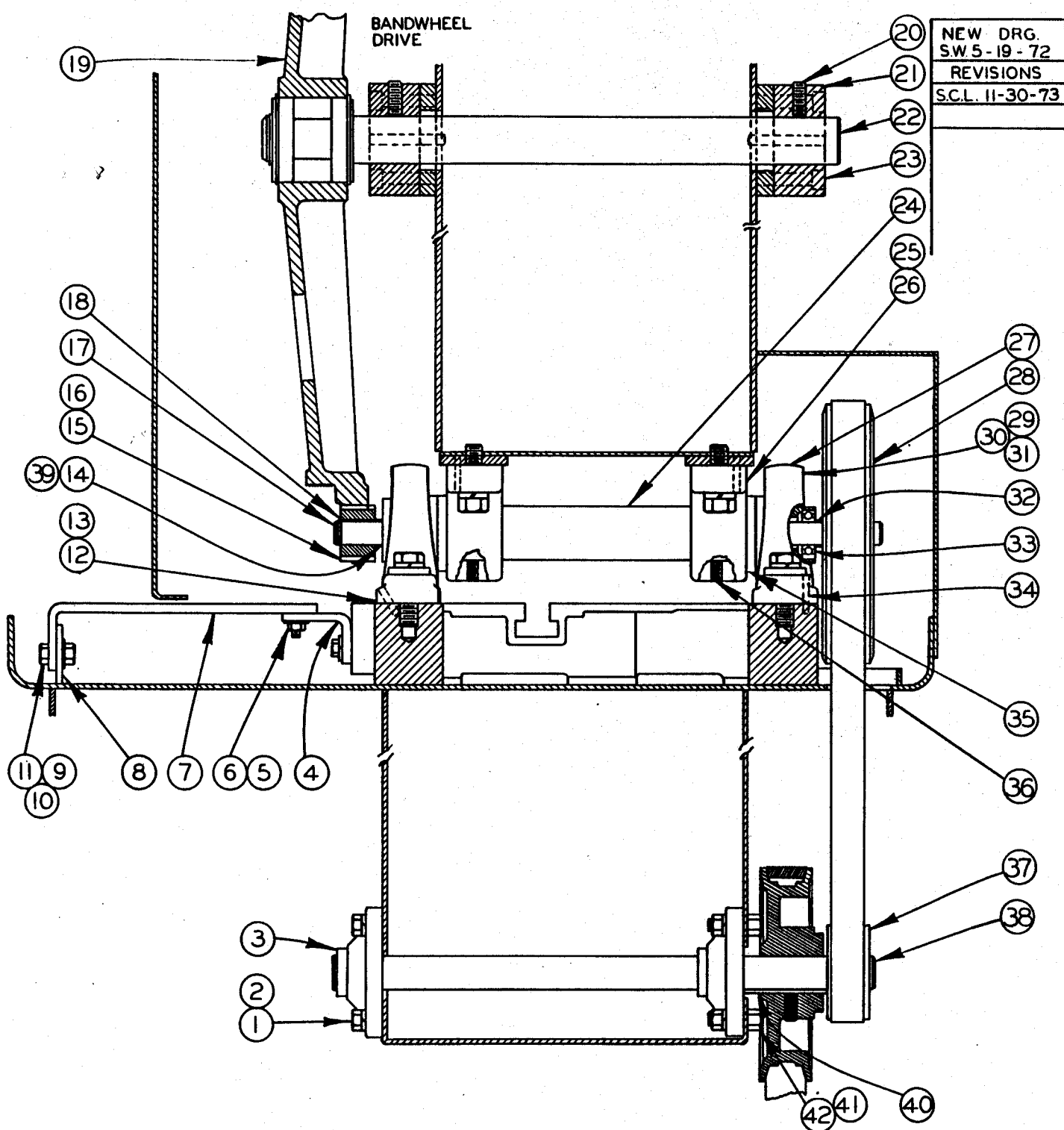


MODEL	FIRST MACH	LAST MACH
C-8	223-64101	223-68470
C-8A	224-64101	224-66170
C-9	260-68101	260-71306
C-9A	261-68101	261-72149
C-9V	296-70101	296-76325
C-9AV	297-70101	297-76194

BAND TENSION ATTACHMENT
W/HYDRAULIC CYLINDER

HYDRAULIC BAND TENSION ATTACHMENT

INDEX NO.	PART NO.	DESCRIPTION	UNITS PER ASS'Y
Ref.	43964	Hydraulic Band Tension Attachment	
1	48487	. Band Tension Cylinder Assembly.....	1
2	101718	. . Piston Rod.....	1
3	4261	. . Roll Pin.....	2
4	35-8615	. . Bearing.....	1
5	Comm.	. . Screw, Hex. Hd. Cap 1/4-20NC x 4.....	4
6	Comm.	. . Washer, Lock 1/4 Std.....	4
7	101724	. . Rear Cylinder Head.....	1
8	101759	. . Collar.....	1
9	101760	. . Piston.....	1
10	13174	. . O-Ring.....	1
11	9563	. . O-Ring.....	1
12	109390	. . Back-Up Washer.....	2
13	108440	. . Cylinder.....	1
14	108441	. . Gasket.....	2
15	108442	. . Front Cylinder Head.....	1
16	108443	. . Bearing Cap.....	1
17	108444	. Tube.....	1
18	9520	. 45° Male Elbow.....	2
19	108992	. Lock and Seal Nut.....	1
20	108448	. Coupling.....	1
21	Comm.	. Washer, Flat 5/8 Std.....	1
22	Stk #210	. Nylon Tube 1/4 O.D.....	A.R.
23	Comm.	. Screw, Rd. Hd. Mach. #8-32NC x 3/8.....	5
24	18281	. Cable Hanger Clamp.....	5
25	9273	. Male Connector.....	1
28	Comm.	. Screw, Rd. Hd. Mach. #10-24NC x 3/8.....	4
29	108447	. Plate.....	1
30	9520	. . 45° Male Elbow.....	1
31	109875	. . Fab Chevron Packing Ring.....	1
32	103126	. . Adapter Ring.....	1
33	18851	. . Spring.....	1
34	108919	. . Shim.....	A.R.
35	109876	. . Homo Chevron Packing Ring.....	2
36	Comm.	. . Screw, Soc. Hd. Mach. #10-24NC x 1/2.....	4
37	31633	. . Handwheel.....	1



NEW DRG.
SW 5-19-72
REVISIONS
S.C.L. 11-30-73

DRIVE ASSEMBLY
SHEET 1 OF 2

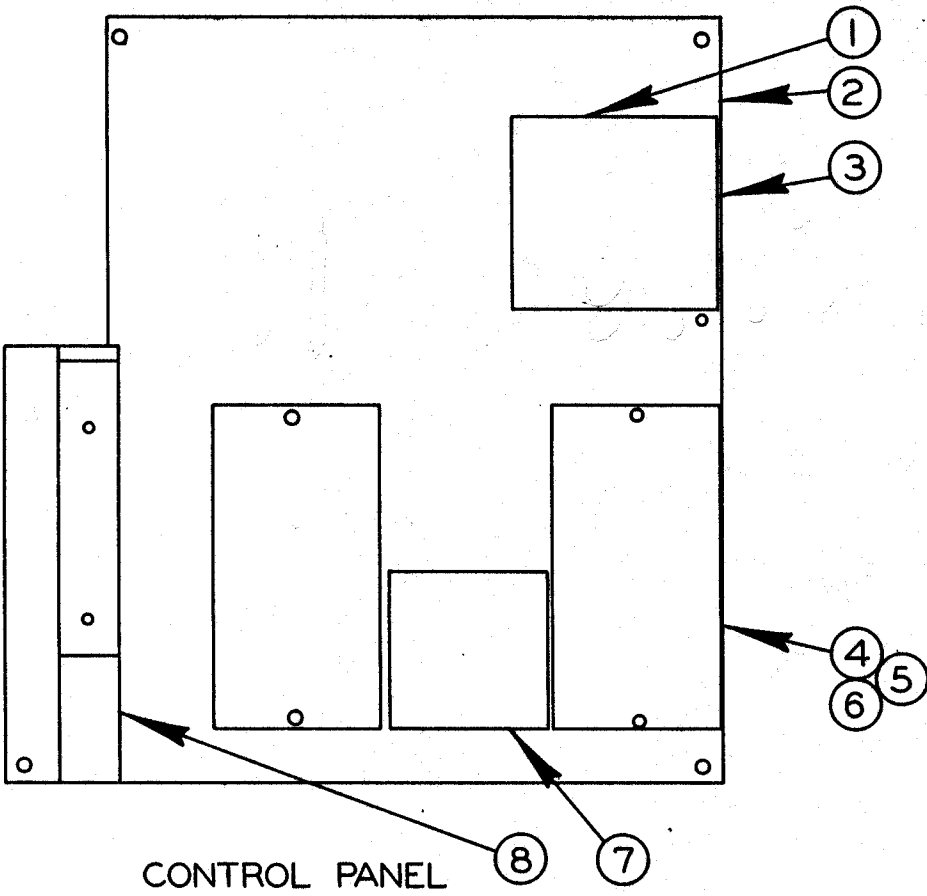
MODEL	FIRST MACH.	LAST MACH.
C-9V	296-70101	296-76325
C-9AV	297-70101	297-76194

DRIVE ASSEMBLY

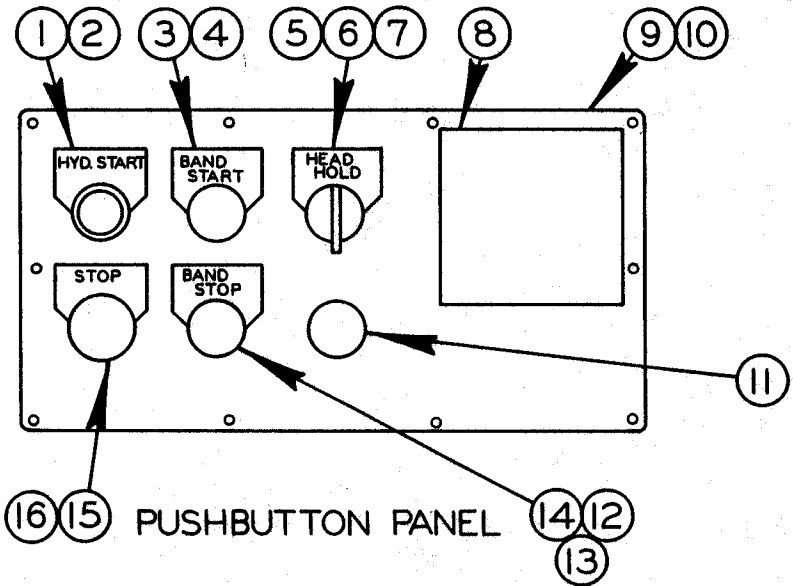
INDEX NO.	PART NO.	DESCRIPTION	UNITS PER ASS'Y
Ref.	501063	Drive Assembly	
1	Comm.	. Washer, Lock 3/8 Std.....	8
2	Comm.	. Screw, Hex. Hd. Cap 3/8-16NC x 3/4	4
3	105424	. Flange Bearing.....	2
4	36910	. Bracket.....	1
5	198010	. Screw, Flat Hd. Mach. 1/4-20NC x 1	2
6	199260	. Washer, 1/4 SAE.....	4
7	36911	. Tray.....	1
8	100720	. Leg.....	1
9	199122	. Nut, Hex. 5/16-18NC.....	2
10	198027	. Screw, Hex. Hd. Cap 5/16-18NC x 3/4.....	6
11	199262	. Washer, 5/16 Std.....	2
12	35-7466	. Dowel Pin.....	2
13	Comm.	. Screw, Hex. Hd. Cap 1/2-13NC x 1 1/8.....	4
14	109371	. Spacer.....	A.R.
15	108083	. Pinion Gear	1
16	10312	. Key.....	2
17	33274	. Shaft.....	1
18	1568	. Retaining Ring	1
19	55794	. Band Wheel (Driver)	1
20	115173	. Screw, Nyloc Set 3/8-16NC x 1.....	2
21	105482	. Mounting Block.....	2
22	33276	. Shaft.....	1
23	Comm.	. Screw, Soc. Hd. Cap 3/8-16NC x 1 3/4.....	8
24	33275	. Tube.....	1
25	33053	. Support.....	2
26	Comm.	. Washer, Lock 1/2 Std	8
27	119852	. Pillow Block.....	2
28	Comm.	. Screw, Soc. Set #10-24NC x 3/8	1
29	Comm.	. Screw, Hex. Hd. Cap 1/2-13NC x 1 3/4.....	4
30	35-5828	. Washer.....	4
31	101005	. Shim.....	A.R.
32	108160	. Spacer	3
33	104700	. Ball Bearing.....	2
34	5-11509	. Dowel Pin.....	2
35	119889	. Spacer.....	2
36	Comm.	. Screw, Soc. Set 1/4-20NC x 1/2	2
37	108709	. Pulley.....	1
38	33272	. Idler Shaft	1
39	121624	. Spacer.....	A.R.
40	12141	. Key.....	1
41	Comm.	. Nut, Hex. 3/8-16NC	4
42	Comm.	. Screw, Hex. Hd. Cap 3/8-16NC x 1.....	4

*Note: Starred items used only on (C-9V)

NEW DRG.
SW. 5-26-72
REVISIONS
S.C.L. 12-3-73



CONTROL PANEL



PUSHBUTTON PANEL

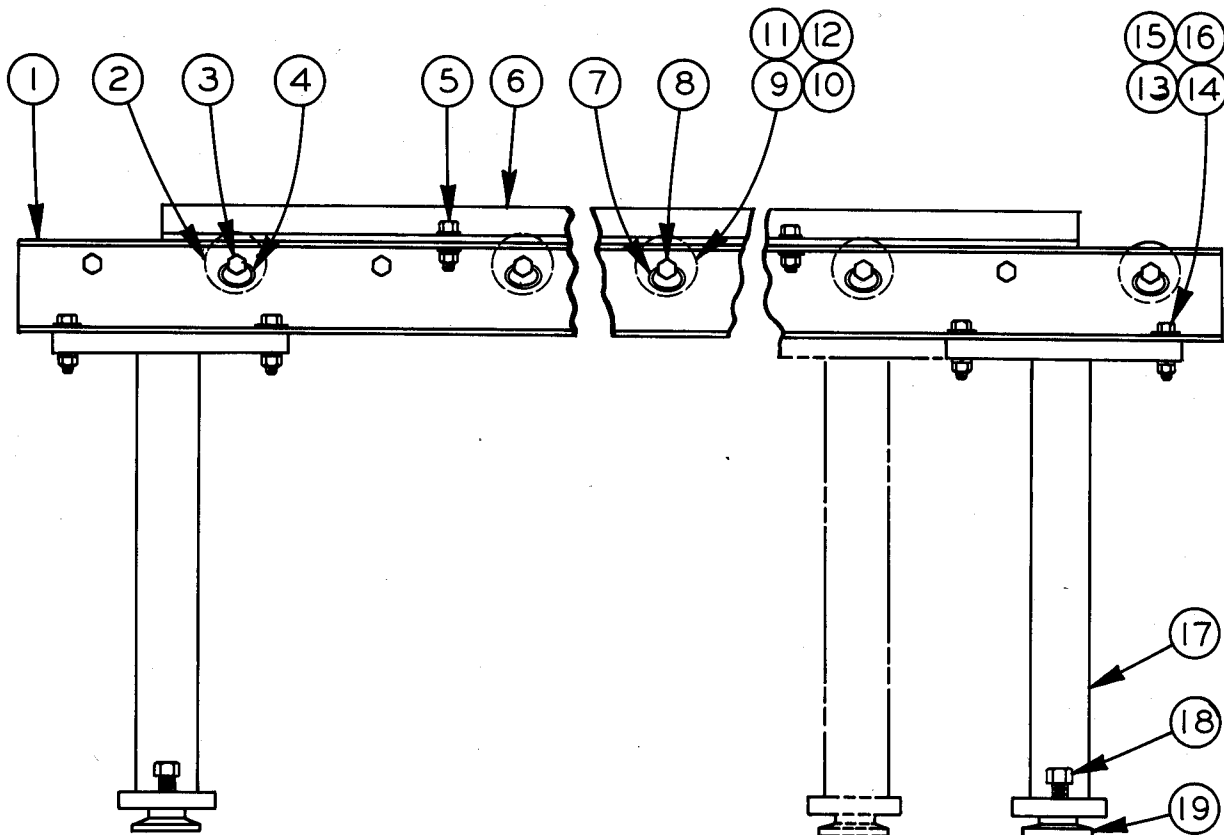
MODEL FIRST MACH. LAST MACH.
 C-9V 296-70101 296-76325

PUSHBUTTON AND CONTROL PANELS

INDEX NO.	PART NO.	DESCRIPTION	UNITS PER ASS'Y
Ref.	129956	Control Panel Assembly	
1	104720-K	. Fuse.....	1
*2	403985	. Panel.....	1
3	48501	. Transformer Ass'y 210/420V 400VA	Use
	43805	. Transformer Ass'y 240/480V 400VA	
	44056	. Transformer Ass'y 380/575V 400VA	One
4	118283	. Magnetic Starter (Size-O).....	2
5	Comm.	. Screw, Rd. Hd. Mach. #10-24 x 1/4(Plated)	14
6	Comm.	. Washer, Lock #10 Ext Tooth.....	12
7	128709	. Overload Relay.....	1
8	102535	. Terminal Block Assembly	1
	Following items not shown:		
	Stk #721	. Wire, Black #12 Stranded.....	A.R.
	Stk #734	. Wire, Red #14 Stranded.....	A.R.
	Comm.	. Wire, Markers (Brady Type)	A.R.
Ref.	121706	Pushbutton Panel Assembly	
1	14959	. Pushbutton Operator (Black).....	2
2	108001	. Legend Plate.....	1
3	104820	. Contact Block.....	2
4	118517	. Legend Plate.....	1
5	100974-B	. Selector Switch Operator	1
6	101663	. Contact Block.....	1
7	108920	. Legend Plate.....	1
8	39539	. Meter Assembly	1
9	401912	. Escutcheon.....	1
10	47979	. Gasket.....	1
11	5538	. Closing Plate.....	1
12	14960	. Pushbutton Operator (Red).....	1
13	104821	. Contact Block.....	2
14	118518	. Legend Plate.....	1
15	14961	. Pushbutton Operator (Red).....	1
16	112486	. Legend Plate.....	1

*Note: Before Ser. #296-73191, #403985 Panel was #401354.

REVISIONS
REVISED AND REDRAWN. R.M.V. 12-15-67

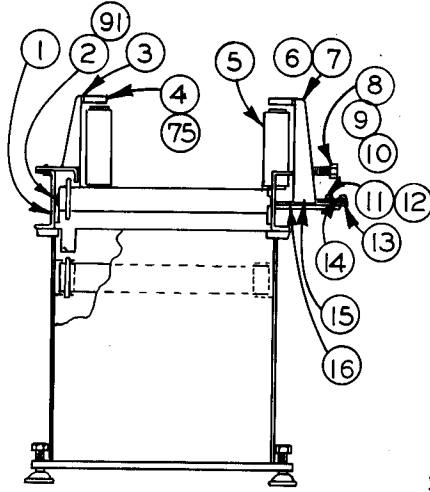


THIS SUPPORT WILL ONLY BE IN THIS POSITION WHEN CONVEYOR IS USED ON MODELS C-12, C-57, C-67 & C-69.

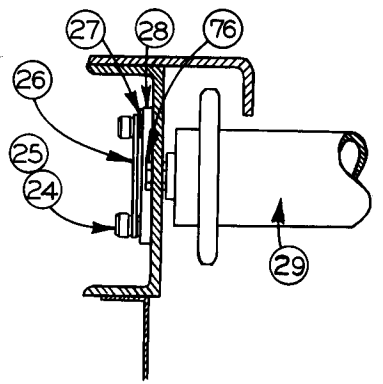
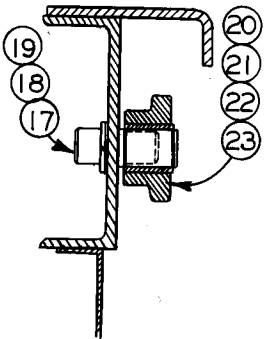
5' & 10' CONVEYOR ASSEMBLY
(12" & 15" ROLLERS)

5' & 10' CONVEYOR ASSEMBLIES

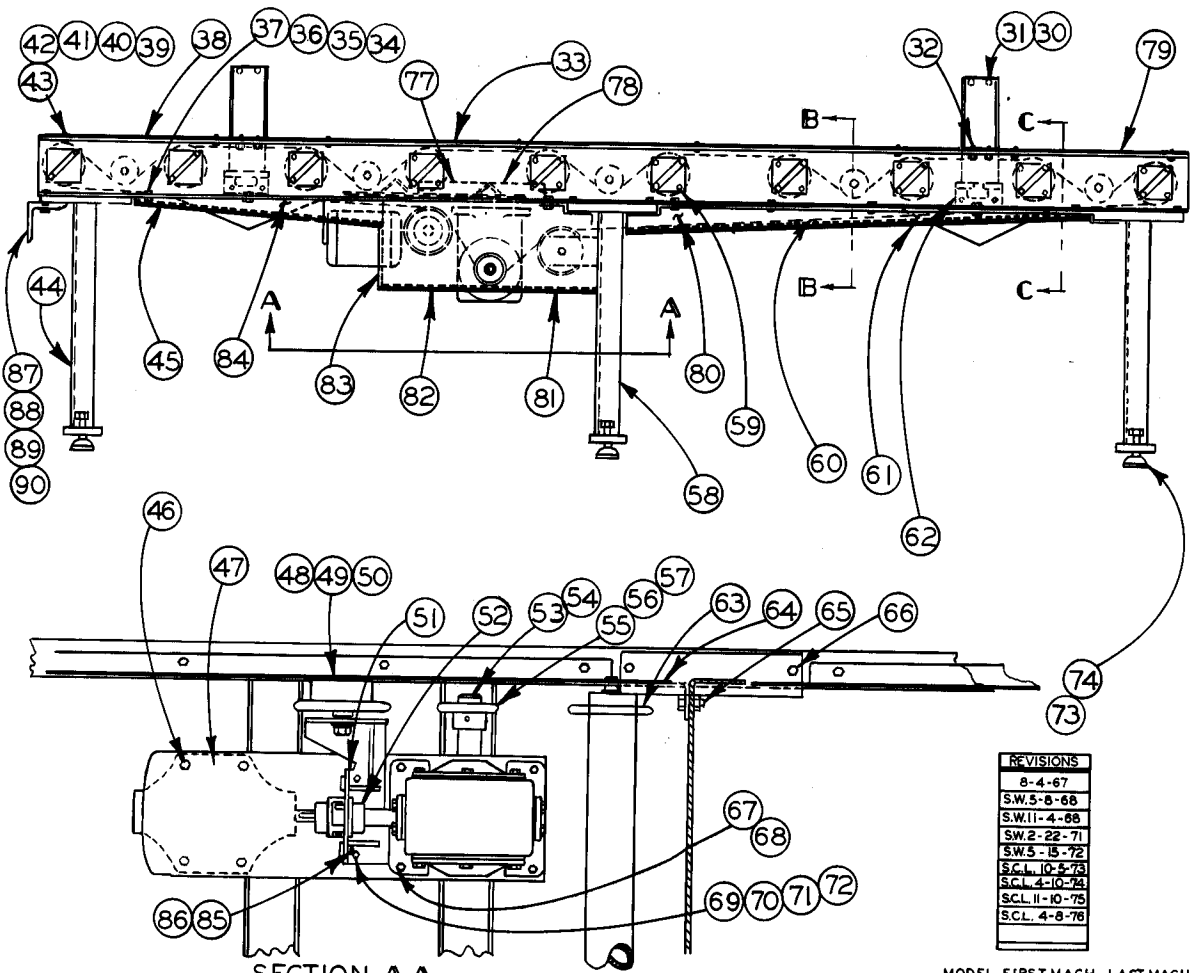
INDEX NO.	PART NO.	DESCRIPTION	UNITS PER ASS'Y.
Ref.	55098	5' Conveyor Assembly, C-12, C-57, C-58, C-67, C-68, C-167A, C-168A	
Ref.	55607	5' Conveyor Assembly, C-169 & C-170	
Ref.	55646	5' Conveyor Assembly, C-6, C-7, C-8, C-8A, C-9, C-9A, C-69, C-70 & C-270	
1	45543	. Channel	2
5	Comm.	. Screw, Hex. Hd. Cap, 3/8-16NC x 1"	4
6	25394	. Fence	2
7	10916	. Hog Rings	10
8	7285	. Hex. Shaft	5
9	10898	. 12" Roller Weldment	5
	10899	. 18" Roller Assembly	5
10	114154	. . 18" Tube	1
11	114111	. . Bearing	2
12	114110	. . Star Ring	2
13	Comm.	. Screw, Hex. Hd. Cap, 3/8-16NC x 1-1/2"	8
14	Comm.	. Washer, Lock, 3/8 Std.	12
15	Comm.	. Nut, Hex., 3/8-16NC	12
17	54770	. Support Ass'y. (Used on Ass'y. #55098)	2
	54889	. Support Ass'y. (Used on Ass'y. #55607)	2
	55618	. Support Ass'y. (Used on Ass'y. #55646)	2
18	Comm.	. Screw, Hex. Hd. Cap, 1" - 18NC x 2"	4
19	12420	. Foot Castings	4
Ref.	54767	10' Conveyor Assembly, C-12, C-57, C-58, C-67, C-68, C-167A & C-168A	
Ref.	54890	10' Conveyor Assembly, C-169 & C-170	
Ref.	55645	10' Conveyor Assembly, C-6, C-7, C-8, C-8A, C-9 C-9A, C-69, C-70 & C-270	
Ref.	55982	10' Conveyor Assembly, CZ-1620	
1	45543	. Channel	4
	45542	. Conveyor Sub-Ass'y. (Used on Ass'y. #54890)	2
	45544	. . Channel Sub-Ass'y.	1
2	10899	. . 18" Roller Ass'y.	5
	114154	. . . 18" Tube	1
	114111	. . . Bearings	2
	114110	. . . Star Rings	2
3	7285	. . Hex. Shaft	2
4	10916	. . Hog Ring	10
5	Comm.	. Screw, Hex. Hd. Cap, 3/8-16NC x 1"	4
6	25394	. Fence	2
7	10916	. Hog Ring	20
8	7285	. Hex. Shaft	10
9	10899	. 18" Roller Ass'y.	10
10	114154	. . 18" Tube	1
11	114111	. . Bearings	2
12	114110	. . Star Rings	2
13	Comm.	. Screw, Hex. Hd. Cap, 3/8-16NC x 1-1/2"	16
14	Comm.	. Nut, Hex., 3/8-16NC	20
15	Comm.	. Washer, Lock, 3/8 Std.	20
17	54770	. Support Ass'y. (Used on Ass'y. #54767)	3
	54889	. Support Ass'y. (Used on Ass'y. #54890)	3
	55618	. Support Ass'y. (Used on Ass'y. #55645)	3
	55982	. Support Ass'y. (Used on Ass'y. #55982)	3
18	Comm.	. Screw, Hex. Hd. Cap, 1" - 18NC x 2"	6
19	12420	. Foot Casting	6



SECTION BB



SECTION CC



SECTION AA

CONVEYOR ASSEMBLY
(MOTORIZED)

REVISIONS	
8-4-67	
S.W.5-8-68	
S.W.11-4-68	
S.W.2-22-71	
S.W.5-15-72	
S.C.L. 10-5-73	
S.C.L. 4-10-74	
S.C.L. 11-10-75	
S.C.L. 4-8-76	

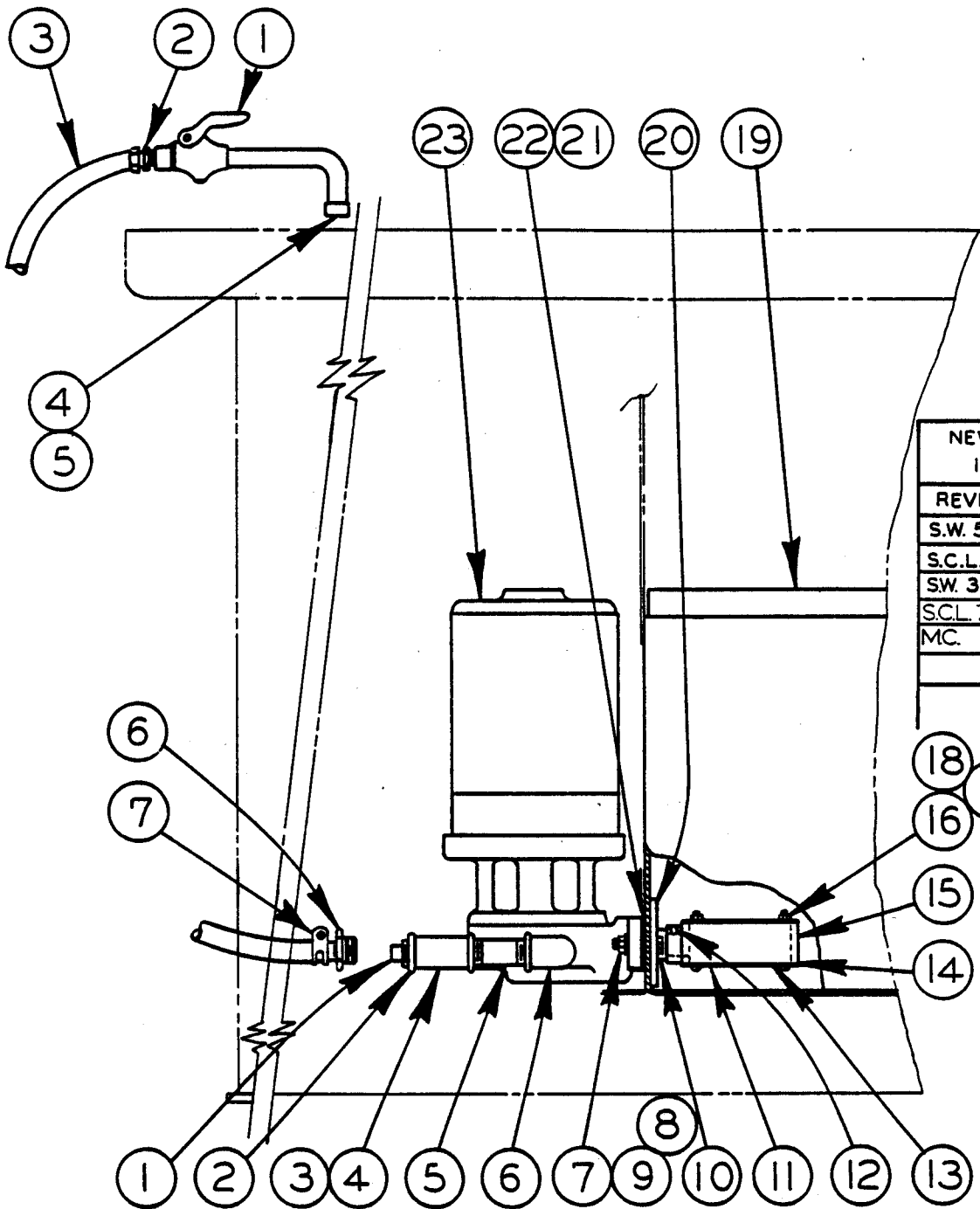
MODEL	FIRST MACH	LAST MACH
C-7	226-64101	226-66587
C8A	224-64101	224-66170
C8	223-64101	223-68470
C-9	260-68101	260-71308
C-9V	296-70101	296-75310
TF20	273-68101	
C-12	114-56101	114-701386
C-69	155-60400	155-721269
C-169	173-60300	173-72582
C-79	300-70101	
C-179	329-74101	

CONVEYOR ASSEMBLY 16", 18", and 20"
(Motorized)

INDEX NO.	PART NO.	DESCRIPTION	UNITS PER ASS'Y	INDEX NO.	PART NO.	DESCRIPTION	UNITS PER ASS'Y
Ref.	56478	16" Motorized Conveyor Ass'y (C-69, C-79)		45	302955	Guard	1
Ref.	56481	16" Motorized Conveyor Ass'y (C-12)		46	198029	Screw, Hex. Hd. Cap 5/16-18NC x 1	4
Ref.	56482	16" Motorized Conveyor Ass'y (C-8, C-9, C-9V)		47	13596	Motor	1
Ref.	56569	16" Motorized Conveyor Ass'y (C-169)		48	106848	Sprocket	1
Ref.	502790	16" Motorized Conveyor Ass'y (TF-14)		49	106849	Shaft	1
Ref.	52970	18" Motorized Conveyor Ass'y (C-12)		50	106847	Bearing	1
Ref.	56470	18" Motorized Conveyor Ass'y (C-69, C-79)		51	47265	Bracket Weldment	1
Ref.	56571	18" Motorized Conveyor Ass'y (C-169, C-179)		52	103743	Coupling	1
Ref.	58237	20" Motorized Conveyor Ass'y (TF-20)		53	14462	Spacer	4
1	45928	Channel Assembly (Used on Assy #56478, 56481, 56482, 56569, 503790)	1	54	13593	Reducer	1
	43597	Channel Assembly (Used on Assy #52970, 56470, 56571)	1	55	15453	Sprocket	1
	49789	Channel Assembly (Used on Assy #58237)	1	56	13595	Sprocket	1
2	102277	Hex. Shafts (Used on Ass'y #56478, 56481, 56482, 56569, 503790)	11	57	198422	Screw, Soc. Set 1/4-20NC x 1/4	1
	7643	Hex. Shafts (Used on Ass'y #52970, 56470, 56571)	1	58	55575	Support Ass'y (Used on Ass'y #56478, 56482)	1
	114277	Hex. Shafts (Used on Ass'y #58237)	11	55023	Support Ass'y (Used on Ass'y #56481)	1	
3	102305	Spacer (#56478, 56481, 52970, 56569)	4	56534	Support Ass'y (Used on Ass'y #56569)	1	
4	11719	Top Support Plate	4	53894	Support Ass'y (Used on Ass'y #52970)	1	
5	11722	Roller	4	55584	Support Ass'y (Used on Ass'y #56470)	1	
6	43620	Vertical Roller Assembly	2	56535	Support Ass'y (Used on Ass'y #56571)	1	
7	43668	Jaw Sub-Assembly	1	58239	Support Ass'y (Used on Ass'y #58237)	1	
8	12419	Collar	1	503778	Support Ass'y (#503790)	1	
9	4233	Roll Pin	1	101691	Dowel	40	
10	12418	Bolt	1	106959	Chain	1	
11	198291	Screw, Soc. Hd. Cap 1/2-13NC x 3/4	2	405008	Guard	1	
12	199266	Washer, 1/2 Std.	2	59	29662	Base Ass'y (Used on Ass'y #56478, 56481, 56482, 56569, 503790)	2
13	25686	Base Sub-Assembly	1	60	300204	Base Ass'y (Used on Ass'y #58237)	2
14	198069	Screw, Hex. Hd. Cap 1/2-13NC x 2	4	61	25566	Base Ass'y (Used on Ass'y #52970, 56470, 56571)	2
15	7694	T-Nut	4	62	10916	Hog Ring	2
16	198047	Screw, Hex. Hd. Cap 3/8-16NC x 1 1/4	4	64	25493	Angle Bracket	2
17	198306	Screw, Soc. Hd. Cap 5/8-11NC x 3/4	6	65	198046	Screw, Hex. Hd. Cap 3/8-16NC x 1	8
18	199267	Washer, 5/8 Std.	6	66	198049	Screw, Hex. Hd. Cap 3/8-16NC x 1 3/4	12
19	199328	Washer, Lock 5/8 Std.	6	67	199327	Washer, Lock 1/2 Std.	4
20	106898	Sprocket	5	68	198068	Screw, Hex. Hd. Cap 1/2-13NC x 1 3/4	4
21	35-7558	Retaining Ring	12	69	198030	Screw, Hex. Hd. Cap 5/16-18NC x 1 1/4	3
22	35-3018	Bearing	5	70	6-04312	Shim	9
23	106946	Shaft	5	71	6-04311	Shim	12
24	198258	Screw, Soc. Hd. Cap 5/16-18NC x 3/4	40	72	199121	Nut, Hex. 5/16-18NC	3
25	199323	Washer, Lock 5/16 Std.	47	73	12420	Foot Casting	6
26	106798	End Bar	20	74	198093	Screw, Hex. Hd. Cap 1-8NC x 2	6
27	199262	Washer, Flat 5/16 Std. S.A.E.	88	75	198448	Screw, Soc. Set 3/8-16NC x 3/8	4
28	106797	Support Plate	20	76	122693	Hex. Shaft	10
29	102278	Roller 22" (Used on Ass'y #56478, 56482, 56569, 503790)	11	77	302926	Angle	1
	12227	Roller 24" (Used on Ass'y #52970, 56470, 56571)	11	78	302927	Angle	1
	114278	Roller 26" (Used on Ass'y #58237)	11	79	404923	Guard	1
30	25501	Up-Right Assembly	2	80	404930	Guard	1
31	198045	Screw, Hex. Hd. Cap 3/8-16NC x 7/8	8	81	302953	Guard	1
32	198048	Screw, Hex. Hd. Cap 3/8-16NC x 1 1/2	12	82	302954	Guard	1
33	404927	Guard	1	83	302955	Guard	1
34	198010	Screw, Hex. Hd. Cap 1/4-20NC x 1	10	84	404929	Guard	1
35	199116	Nut, Hex. 1/4-20NC	10	85	302952	Guard	1
36	199321	Washer, Lock 1/4 Std.	6	86	198867	Screw, Rd. Hd. Mach. #10-24NC x 3/8	21
37	199260	Washer, Flat 1/4 Std. S.A.E.	10	87	405005	Guard	1
38	404922	Guard	1	88	303323	Mounting Angle	1
39	198909	Screw, Rd. Hd. Mach. 3/8-16NC x 1	12	89	198051	Screw, Hex. Hd. Cap 3/8-16 NC x 2-1/4	2
40	199126	Nut, Hex. 3/8-16NC	36	90	198066	Screw, Hex. Hd. Cap 1/2-13 NC x 1-1/4	4
41	199332	Washer, Lock 3/8 Std.	48	91	199266	Washer, Flat 1/2 Std.	4
42	199302	Washer, Flat 3/8 Std.	12		133682-84	Spacer (#56482, 58237, 56571, 56470)	A.R.
43	13743	Washer, Bevel	26				
44	55574	Support Ass'y (Used on Ass'y #56478, 56482)	2				
	55022	Support Ass'y (Used on Ass'y #56481)	2				
	56424	Support Ass'y (Used on Ass'y #56569)	2				
	53893	Support Ass'y (Used on Ass'y #52970)	2				
	55583	Support Ass'y (Used on Ass'y #56470)	2				
	56465	Support Ass'y (Used on Ass'y #56571)	2				
	58238	Support Ass'y (Used on Ass'y #58237)	2				
	503777	Support Ass'y (Used on Ass'y #503790)	2				

#400965

WASH DOWN HOSE ASS'Y



NEW DRG.
1-9-68
REVISIONS
S.W. 5 - 11-72
S.C.L. 12-3-73
SW 3 - 21 - 77
SCL 7 - 10-78
MC. 11-7-80

COOLANT ASSEMBLY

MODEL	FIRST MACH	LAST MACH.
C-9	260-68101	260-71306
C-9A	261-68101	261-72149
C-9V	296-70101	296-76325
C-9AV	297-70101	297-76194
C-1212M	371-77101	371-80179
C-1212A	372-77101	372-80192

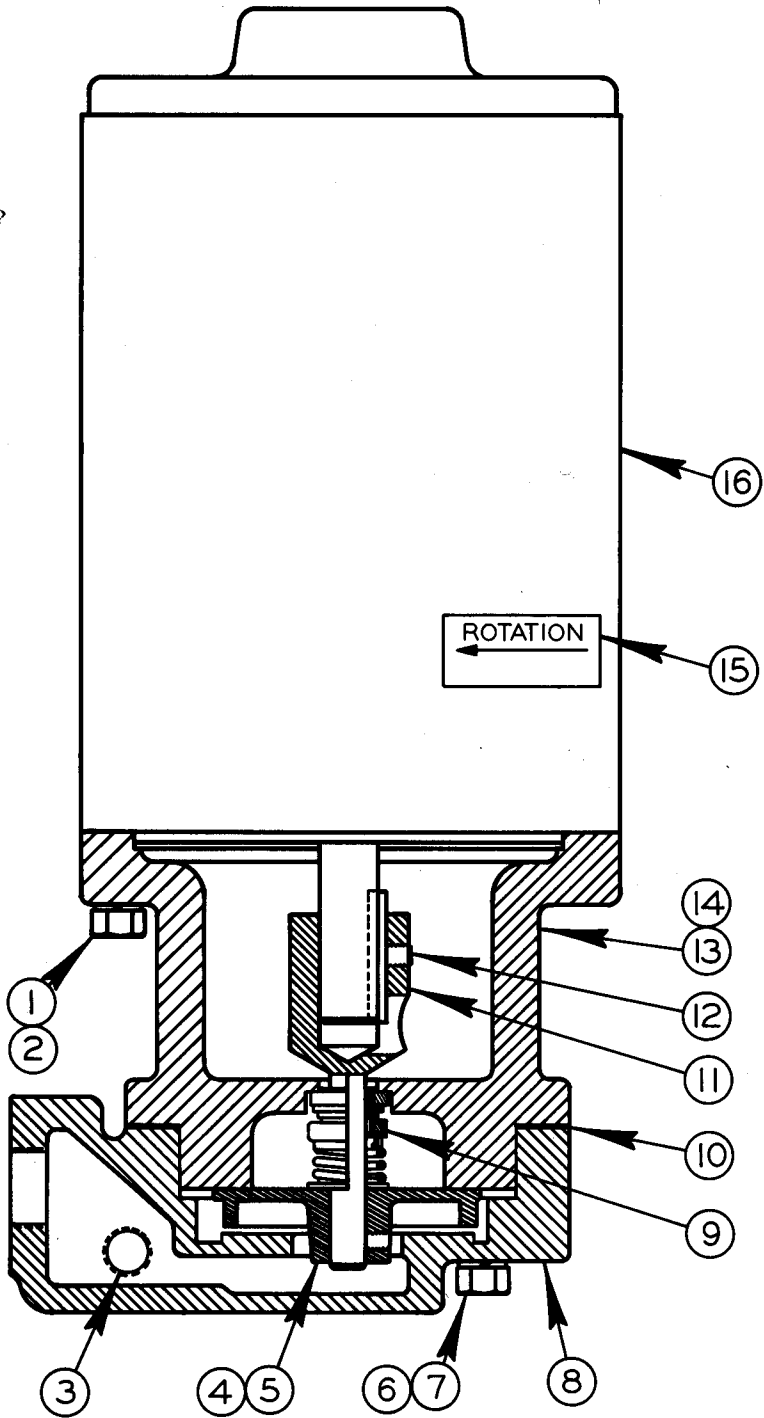
COOLANT ASSEMBLY

INDEX NO.	CATALOG NO.	DESCRIPTION	UNITS PER ASS'Y
REF.	094-009651	Washdown Hose Assembly	
1	090-147570	. Valve	1
2	091-248310	. Hose Coupling	1
3	090-000035	. Hose 3/8 I.D. x 11/16 O.D.	A.R.
4	091-992578	. Washer, Flat #8 Std. S.A.E.	1
5	091-222851	. "O"-Ring	1
6	090-096678	. Barbed Insert	1
7	091-044788	. Hose Clamp	1
REF.	094-009503	Coolant Tank Ass'y (C-9, C-9A, C-9V, C-9AV, C-1212M)	
REF.	094-070364	Coolant Tank Ass'y (C-1212A)	
1	090-012766	. Pipe Plug (When Wash Down Hose is Used, Plug Not Used)	1
2	135-033774	. Tee	1
3	135-035061	. Reducer Bushing	1
4	091-033167	. Barbed Insert	1
5	090-058132	. Pipe Nipple	1
6	114-003478	. 90° Street Elbow	1
7	091-980482	. Screw, Hex. Hd. Cap 3/8-16NC x 11/2	2
8	091-993329	. Washer, Lock 3/8 Std.	2
9	091-991265	. Nut, Hex. 3/8-16NC	2
10	090-019126	. Pipe Nipple	1
11	090-209214	. Coolant Strainer Assembly	1
12	091-984104	. . Screw, Soc. Hd. Set #10-24NC x 1/4"	1
13	090-038084	. . Retainer Ring	2
14	090-036195	. . Screen	2
15	090-036203	. . Strainer Body	1
16	091-988790	. . Screw, Rd. Hd. Mach. #10-24NC x 13/4	4
17	091-991117	. . Nut, Hex. #10-24NC	4
18	091-993733	. . Washer, Shake Proof Ext. #10 Std.	4
19	094-009495	. Coolant Tank Weldment (C-9, C-9A, C-9V, C-9AV, C-1212M)	USE ONE
	093-054229	. Coolant Tank Weldment (C-1212A)	ONE
20	090-069204	. Plate	1
21	090-019803	. Gasket	1
22	090-015363	. "O"-Ring	2
23	090-418781	. Coolant Pump Assembly (See Detail)	1

Following Items Not Shown And Used Only on Ass'y #094-070364.

091-086546	. View Gage	1
135-065803	. Sq. Hd. Pipe Plug	1

REVISED AND REDRAWN
S.W. 5-22-70
S.W. 4-25-73
S.C.L. 11-30-73



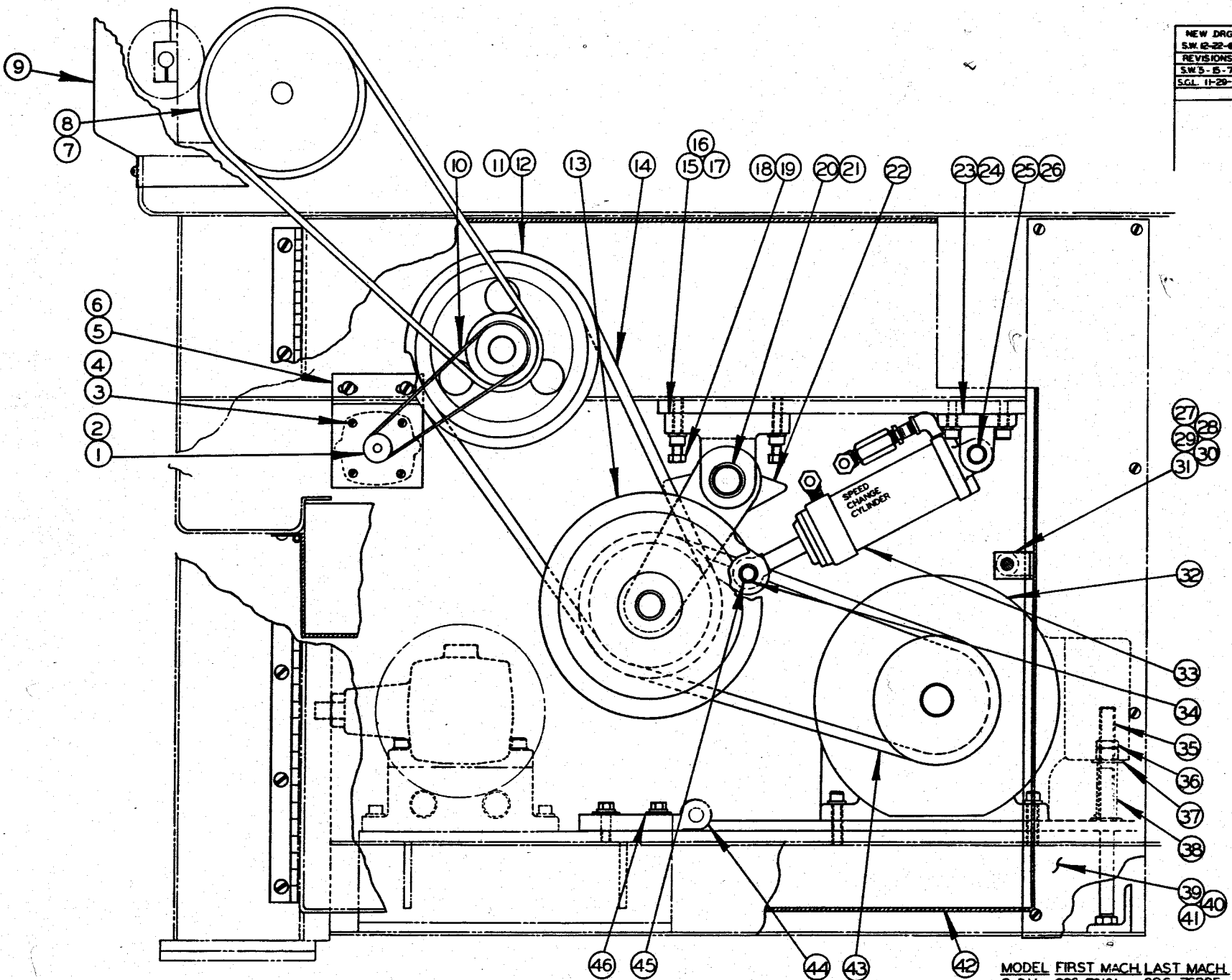
USED ON ALL SAWS WHEN
COOLANT ASSEMBLY IS SUPPLIED

COOLANT PUMP

COOLANT PUMP ASSEMBLY

INDEX NO.	PART NO.	DESCRIPTION	UNITS PER ASSY
Ref.	41878	Coolant Pump Assembly	
1	198047	. Screw, Hex. Hd. Cap 3/8-16NC x 1-1/4.....	4
2	199332	. Washer, Lock 3/8.....	4
3	122748	. Pipe Plug.....	1
4	2929	. Impeller.....	Use
	25106	. Impeller -25V Motor(1450 RPM).....	One
5	198417	. Screw, Soc. Set #10-32NF x 1/4.....	1
6	198033	. Screw, Hex. Hd. Cap 5/16-18NC x 2.....	4
7	199323	. Washer, Lock 5/16.....	4
8	40449	. Impeller Housing.....	1
9	2930	. Roto Flex Seal.....	1
10	2928	. Gasket.....	1
11	7110	. Stub Shaft.....	1
12	198432	. Screw, Soc. Set 1/4-28NF x 1/4.....	1
13	41886	. Adapter.....	1
14	Comm.	. Pipe Plug.....	1
15	4655	. Rotation Decal.....	1
16	7040	. Motor(Specify V, H.P. Cycle, Phase).....	1

NEW DRG.
S.W. 12-22-68
REVISIONS
S.W. 5-5-72
S.G.L. 11-20-73



PS-4-54

PRINTED IN U.S.A.

DRIVE ASSEMBLY
SHEET 2 OF 2

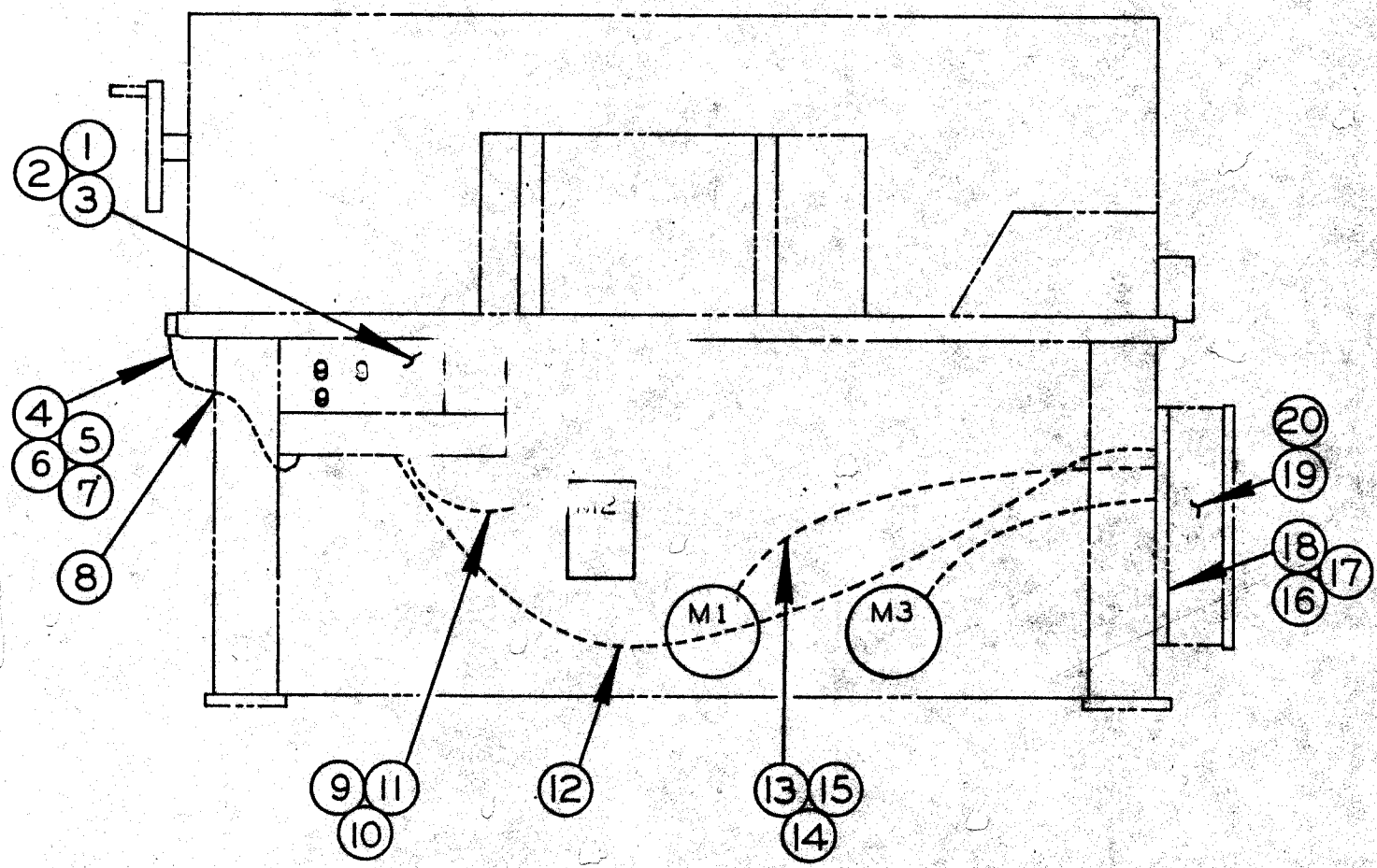
B-9

MODEL FIRST MACH LAST MACH
C-9V 296-70101 296-76325
C-9AV 297-70101 297-76194

VARIABLE DRIVE ASSEMBLY

INDEX NO.	PART NO.	DESCRIPTION	UNITS PER ASS'Y
Ref.	501063	Variable Drive Assembly	
1	116839	. Pulley.....	1
2	Comm.	. Screw, Soc. Set #8-32NC x 1/4.....	1
3	28948	. Tachometer Head.....	1
4	Comm.	. Screw, Rd. Hd. Mach. #8-32NC x 1.....	4
5	38690	. Bracket.....	1
6	Comm.	. Screw, Hex. Hd. Cap 1/4-20NC x 3/8.....	2
7	402391	. Pulley.....	1
8	122656	. Timing Belt.....	1
9	49869	. Rear Cover Weldment.....	1
10	14481	. O-Ring.....	1
11	401798	. Pulley.....	1
12	Comm.	. Screw, Soc. Set 5/16-18NC x 3/4.....	1
13	35-9335	. Variable Sheave Assembly (See Detail).....	1
14	102926	. Belt.....	1
15	401799	. Hinge.....	1
16	Comm.	. Screw, Hex. Hd. Cap 3/8-16NC x 1 1/4.....	10
17	Comm.	. Washer, Lock 3/8 Std.....	20
18	Comm.	. Screw, Hex. Hd. Cap 3/8-16NC x 1 1/4.....	10
19	Comm.	. Nut, Hex. Jam 3/8-16NC.....	2
20	120966	. Pin.....	1
21	35-7558	. Retaining Ring.....	2
22	401800	. Arm.....	1
23	38691	. Hinge.....	1
24	Comm.	. Screw, Hex. Hd. Cap 3/8-16NC x 1.....	8
25	35-9613	. Retaining Ring.....	4
26	18048	. Pin.....	1
27	34-01104	. Door Handle.....	1
28	4229	. Roll Pin.....	1
29	120965	. Shaft (C-9V).....	Use
	101548	. Shaft (C-9AV).....	One
30	118019	. Latch (C-9V).....	Use
	5-02101	. Latch (C-9AV).....	One
31	Comm.	. Screw Soc. Set 1/4-20NC x 1/4.....	1
32	402027	. Motor and Base Assembly.....	1
	116070	. . Electric Motor (60 Cycle).....	Use
	116103	. . Electric Motor (50 Cycle).....	One
	38687	. . Pulley (60 Cycle Operation).....	Use
	38993	. . Pulley (50 Cycle Operation).....	One
	401797	. . Motor Mounting Plate Weldment.....	1
	Comm.	. . Screw, Hex. Hd. Cap 3/8-16NC x 1 1/4.....	4
	121306	. . Cable Assembly.....	1
33	30190	. Cylinder Assembly (See Detail).....	1
34	107923	. Pin.....	1
35	110221	. Stud.....	1
36	Comm.	. Nut, Hex. Jam 1/2-13NC.....	3
37	Comm.	. Washer, Lock 1/2 Std.....	2
38	1875	. Spring.....	1
39	38995	. Panel Weldment (Used on C-9V).....	Use
	38689	. Panel Weldment (Used on C-9AV).....	One
40	Comm.	. Screw, Rd. Hd. Mach. #10-24NC x 3/8.....	7
41	Comm.	. Washer, Lock #10 Std.....	7
42	500079	. Door Weldment (Used on C-9AV).....	1
43	35-2307	. Variable Speed Belt (60 HZ).....	Use
	6456	. Variable Speed Belt (50 HZ).....	One
44	38686	. Hinge.....	2
45	Comm.	. Screw, Soc. Set 5/16-18NC x 1/2.....	1
46	Comm.	. Washer, Flat 3/8 Std.....	4

NEW DRG.
S.W. 5-28-72
REVISIONS
S.C.L. 12-3-73

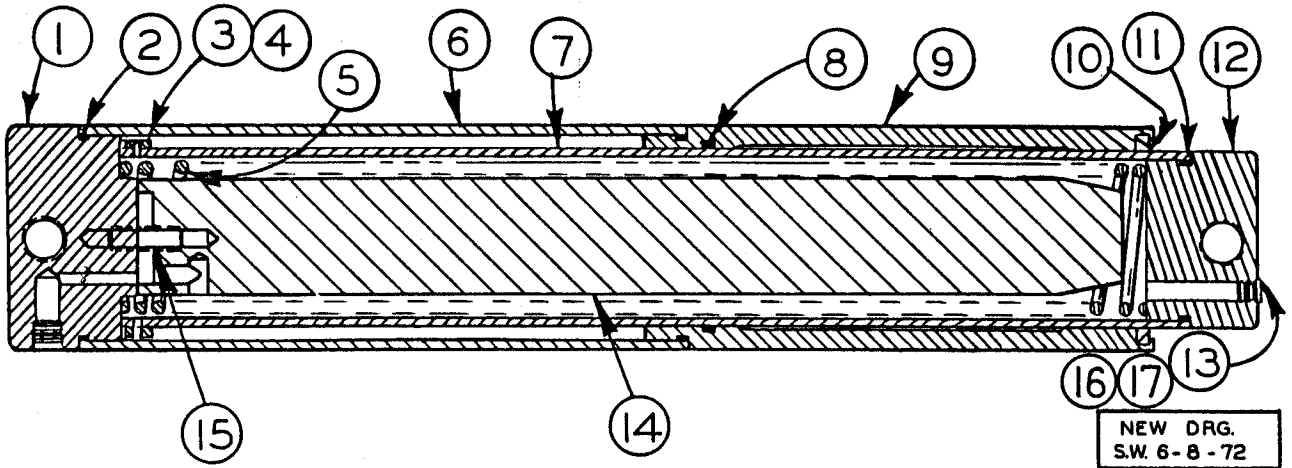


MODEL FIRST MACH LAST MACH
 C-9V 296-70101 296-76325

ELECTRICAL ASSEMBLY

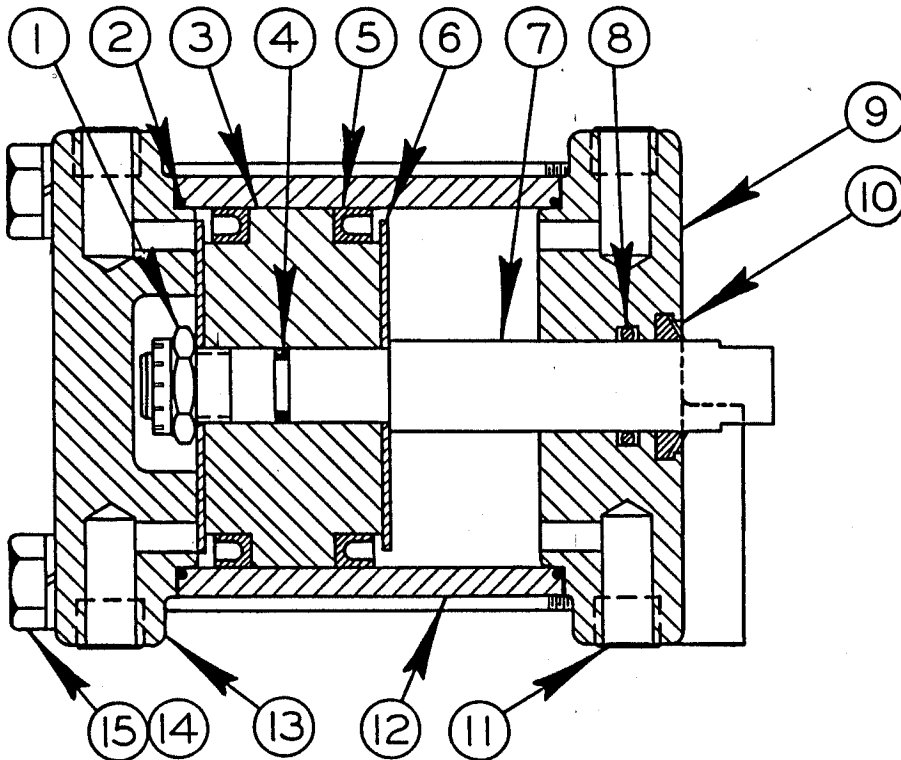
ELECTRICAL ASSEMBLY

INDEX NO.	PART NO.	DESCRIPTION	UNITS PER ASS'Y
Ref.	402037	Electrical Assembly	
1	121706	. Pushbutton Panel Assembly (See Detail).....	1
2	103764-R	. Wire Connector.....	4
3	Comm.	. Screw, Rd. Hd. Mach. #8-32NC x 3/8....	10
4	130071	. Limit Switch.....	1
5	10789	. Cord Grip.....	1
6	15142	. Cord Grip.....	1
7	Stk #790	. Rubber Cord.....	A.R.
8	104506	. Grommet.....	1
9	Stk #520	. 1/2 Sealrite.....	A.R.
10	8437	. Connector 1/2 Straight.....	3
11	Stk #734	. Wire, Red #14 Stranded.....	A.R.
12	123299	. Cable Assembly.....	1
13	Stk #721	. Wire, Black #12 Stranded.....	A.R.
14	Stk.	. Wire Markers (Brady Type).....	A.R.
15	8438	. 90° Connector 1/2.....	3
16	129956	. Control Panel Assembly (See Detail).....	1
17	Comm.	. Nut, Hex. 1/4-20NC (Plated).....	8
18	Comm.	. Washer, Lock 1/4 (Split Plated).....	4
19	47564	. Control Box.....	1
20	Comm.	. Screw, Rd. Hd. Mach. 1/4-20NC x 1/2 (Plated).....	4



HEAD LIFT CYLINDER ASSEMBLY

NEW DRG.
S.W. 6-8-72
REVISIONS
S.C.L. 12-3-73
S.W. 3-21-77
MEC. 12-5-80



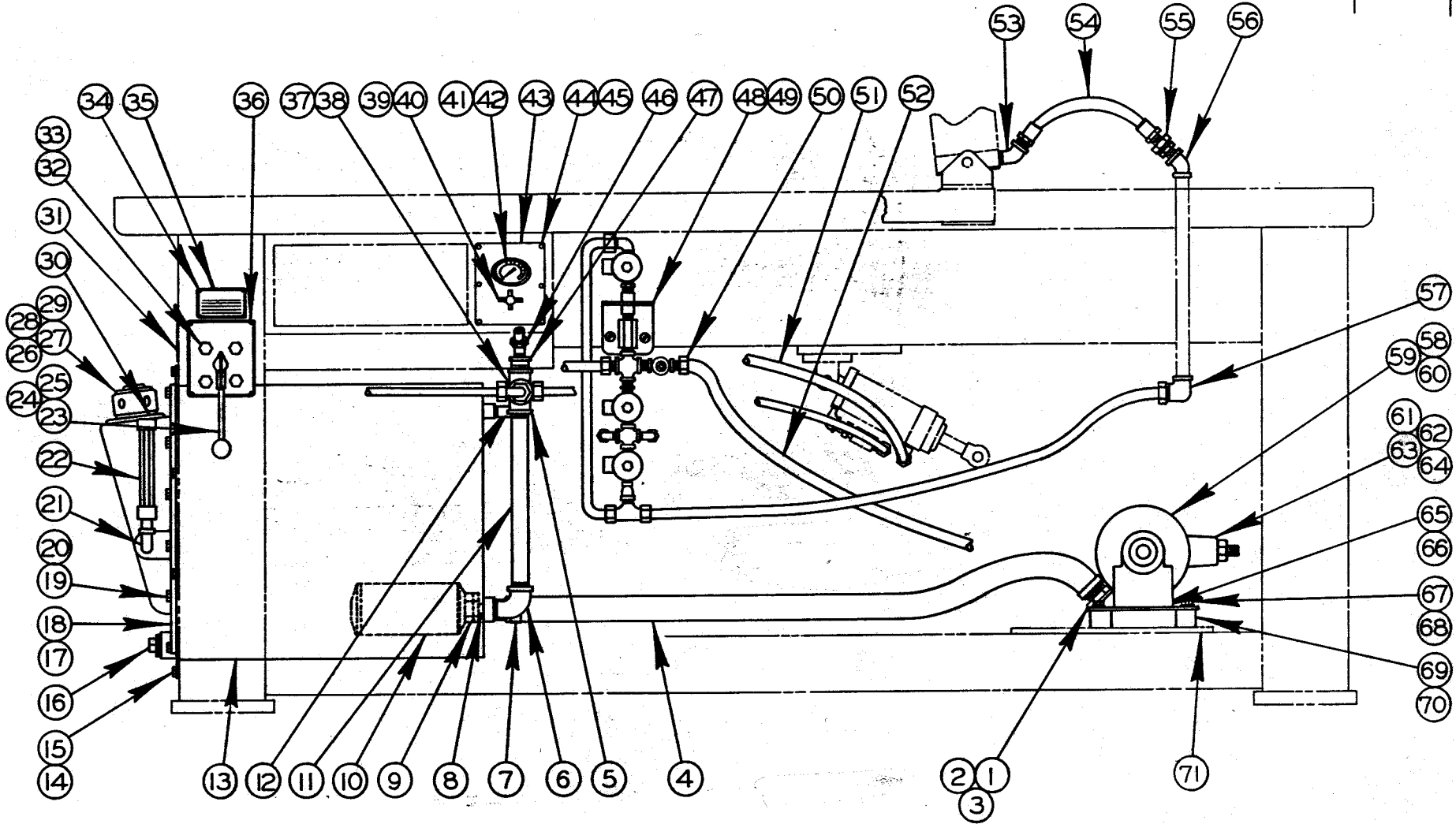
WISE CLAMP CYLINDER ASSEMBLY

MODEL	FIRST MACH.	LAST MACH.
C-7	226-64101	226-66567
C-8A	224-64101	224-66170
C-8	223-64101	223-68470
C-9	260-68101	260-71306
C-9A	261-68101	261-72149
C-9V	296-70101	296-76325
C-9AV	297-70101	297-76194
C-1212M	371-77101	371-80179
C-1212A	372-77101	372-80192

CYLINDER ASSEMBLIES

INDEX NO.	PART NO.	DESCRIPTION	UNITS PER ASS'Y
Ref.	46731	Head Cylinder Assembly	
1	31075	. Outer Cylinder Head.....	1
2	108518	. "O" Ring.....	2
3	32093	. Stop Ring.....	1
4	101000	. Pin.....	4
5	33211	. Spring.....	1
6	32103	. Sleeve.....	1
7	32922	. Inner Cylinder.....	1
8	11871	. "O" Ring.....	1
9	32923	. Outer Cylinder.....	1
10	100292	. Scraper Ring.....	1
11	108517	. "O" Ring.....	1
12	32944	. Inner Cylinder Head.....	1
13	14-115158	. Pipe Plug.....	1
14	39468	. Spring Guide.....	1
15	Comm.	. Screw, Soc. Set 3/8-16NC x 1 1/4.....	1
Ref.	400553	Vise Clamp Cylinder Assembly	
	400552	Vise Clamp Cylinder Assembly	
1	13257	. Locknut.....	1
2	10778	. Gasket (Used on Ass'y #400553).....	2
	123403	. "O" Ring (Used on Ass'y #400552).....	2
3	120518	. Piston.....	1
4	4122	. "O" Ring.....	1
5	13397	. U-Cup.....	2
6	120516	. Washer.....	2
7	120517	. Piston Rod.....	1
8	35-7970	. "O" Ring.....	1
9	400551	. End Cap (Used on Ass'y #400553).....	1
	400557	. End Cap (Used on Ass'y #400552).....	1
10	7070	. Scraper Ring.....	1
11	8345	. Plug.....	2
12	13256	. Cylinder Tube (Used on Ass'y #400553).....	1
	123404	. Cylinder Tube (Used on Ass'y #400552).....	1
13	26030	. Cylinder Block.....	1
14	Comm.	. Screw, Hex. Hd. Cap 1/2-13NC x 5 1/4.....	4
15	Comm.	. Washer, Lock 1/2 Std.....	4
16	Comm.	. Pipe Plug (Used on Ass'y #400552).....	1

NEW DRG.
S.W. 6-16-71
REVISIONS
SCL 12-3-73



PS-7-44

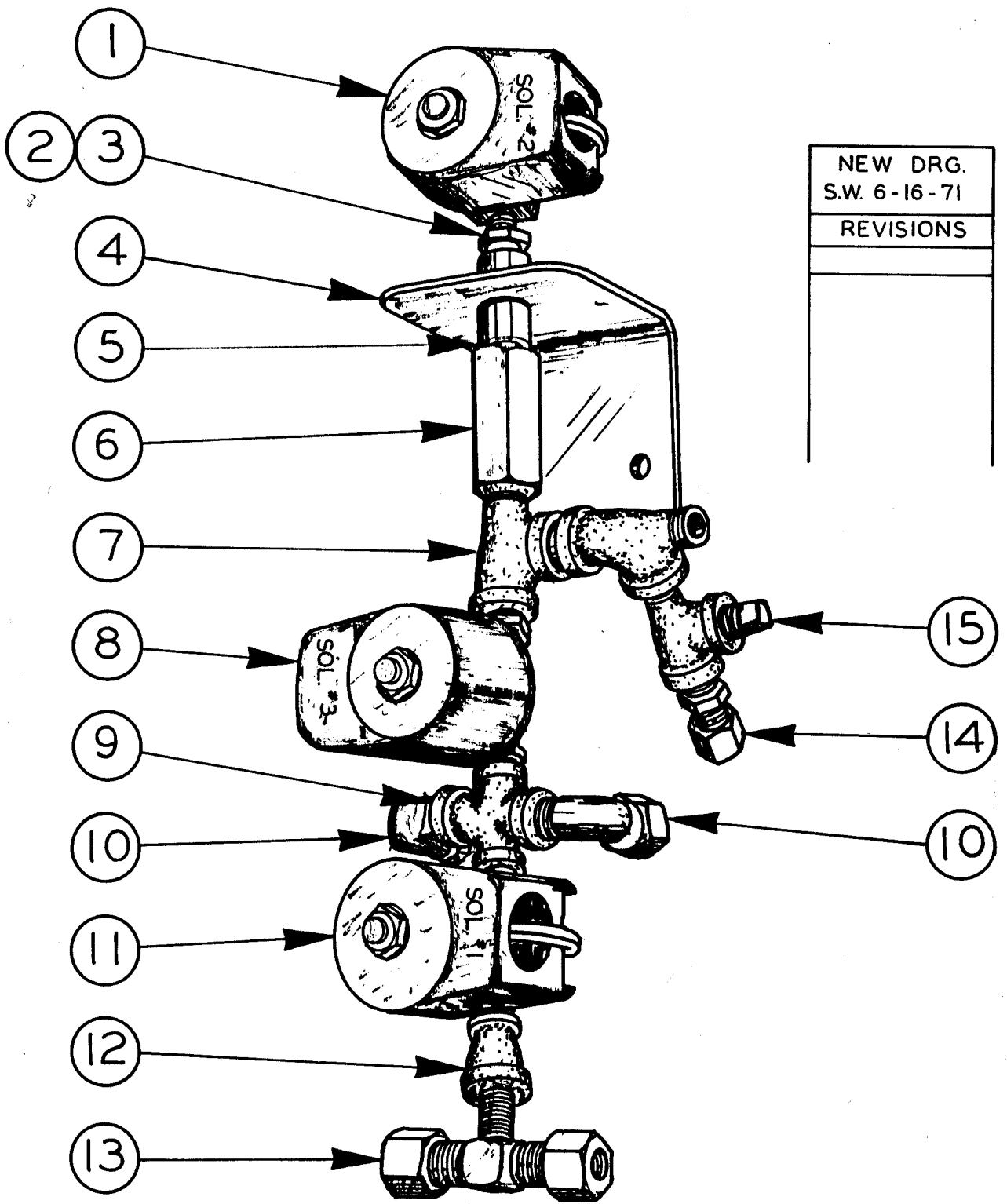
PRINTED IN U.S.A.

HYDRAULIC ASSEMBLY

MODEL FIRST MACH. LAST MACH.
 C-9V 296-70101 296-76325

HYDRAULIC ASSEMBLY

INDEX NO.	PART NO.	DESCRIPTION	UNITS PER ASS'Y
Ref.	500257	Hydraulic Assembly	
1	101711	• 45° Street Elbow	1
2	5733	• Reducer Bushing	1
3	14-161	• Pipe Nipple	2
4	108850	• Hose	1
5	14389	• Cross	1
6	2973	• 90° Street Elbow	1
7	116047	• Hose Clamp	2
8	35-3499	• Close Nipple	1
9	5733	• Reducer Bushing	1
10	7839	• Filter	1
11	104288	• Nipple	1
12	5-11510	• Air Breather	1
13	56753	• Tank Weldment	1
14	Comm.	• Screw, Hex. Hd. Cap 1/4-20NC x 5/8	10
15	Comm.	• Washer, Lock 1/4 Std.	10
16	35-6580	• Plug	1
17	12304	• Gasket	1
18	52861	• Oil Filler Plate	1
19	Comm.	• Screw, Hex. Hd. Cap 1/4-20NC x 3/4	14
20	14-115205	• Washer	14
21	5-11513	• 90° Street Elbow	2
22	13886	• Oil Gage Assembly	1
23	100685	• 4-Way Valve	1
24	113584	• 45° Male Elbow	2
25	9273	• Male Connector	2
26	102285	• Adaptor and Screen Assembly	1
27	105590	• Gasket	2
28	13855	• Filler Neck	1
29	13856	• Filler Cap	1
30	Comm.	• Screw, Rd. Hd. Mach. #10-24NC x 1/2	6
31	116073	• Escutcheon	1
32	Comm.	• Screw, Hex. Hd. Cap 5/16-18NC x 5/8	4
33	Comm.	• Washer, Lock 5/16 Std.	8
34	Comm.	• Screw, Rd. Hd. Drive #2 x 1/4 Type "U"	8
35	122256	• Escutcheon	1
36	38397	• Escutcheon	1
37	10409	• 90° Male Elbow	3
38	8136	• Reducer Bushing	2
39	115510	• Valve Feed Force	1
40	5-11517	• Reducer Bushing	2
41	108839	• Feed Gage	1
42	2695	• Female Connector	1
43	35912	• Panel Escutcheon	1
44	Comm.	• Screw, Rd. Hd. Mach. #8-32NC x 5/16	6
45	Comm.	• Washer, Lock #8 Std.	6
46	9522	• 45° Male Elbow	3
47	14-03521	• Reducer Bushing	1
48	402771	• Hydraulic Sub-Assembly (See Detail)	1
49	Comm.	• Screw, Rd. Hd. Sht. Metal #14-10 x 5/8	2
50	1401	• Male Connector	1
51	Stk #210	• Nylon Tubing	A.R.
52	Stk #211	• Nylon Tubing	A.R.
53	114552	• 45° Street Elbow	1
54	14140	• Hose	1
55	14-115109	• Swivel Adapter Union	1
56	2196	• 45° Elbow	1
57	18226	• 90° Female Elbow	1
58	121500	• Electric Motor 3/4 H.P. 1500 RPM 50 Cycle	Use
59	121499	• Electric Motor 3/4 H.P. 1800 RPM 60 Cycle	One
60	111473	• Coupling	1
61	112440	• Hydraulic Pump	1
62	48289	• Sub-Plate	1
63	Comm.	• Screw, Hex. Hd. Cap 3/8-16NC x 1-1/4	4
64	Comm.	• Screw, Soc. Hd. Cap 3/8-16NC x 1-1/4	2
65	8138	• Male Connector	1
66	14754	• Reducer Bushing	1
67	Comm.	• Screw, Hex. Hd. Cap 5/16-18NC x 1-3/4	1
68	Comm.	• Washer 5/16 SAE	4
69	111253	• Spacer	4
70	Comm.	• Washer, Lock 3/8 Std.	6
71	130065	• Conduit Sub-Assembly	1



HYDRAULIC VALVE SUB-ASSEMBLY

MODEL FIRST MACH. LAST MACH.
C-9V 296-70101 296-76325

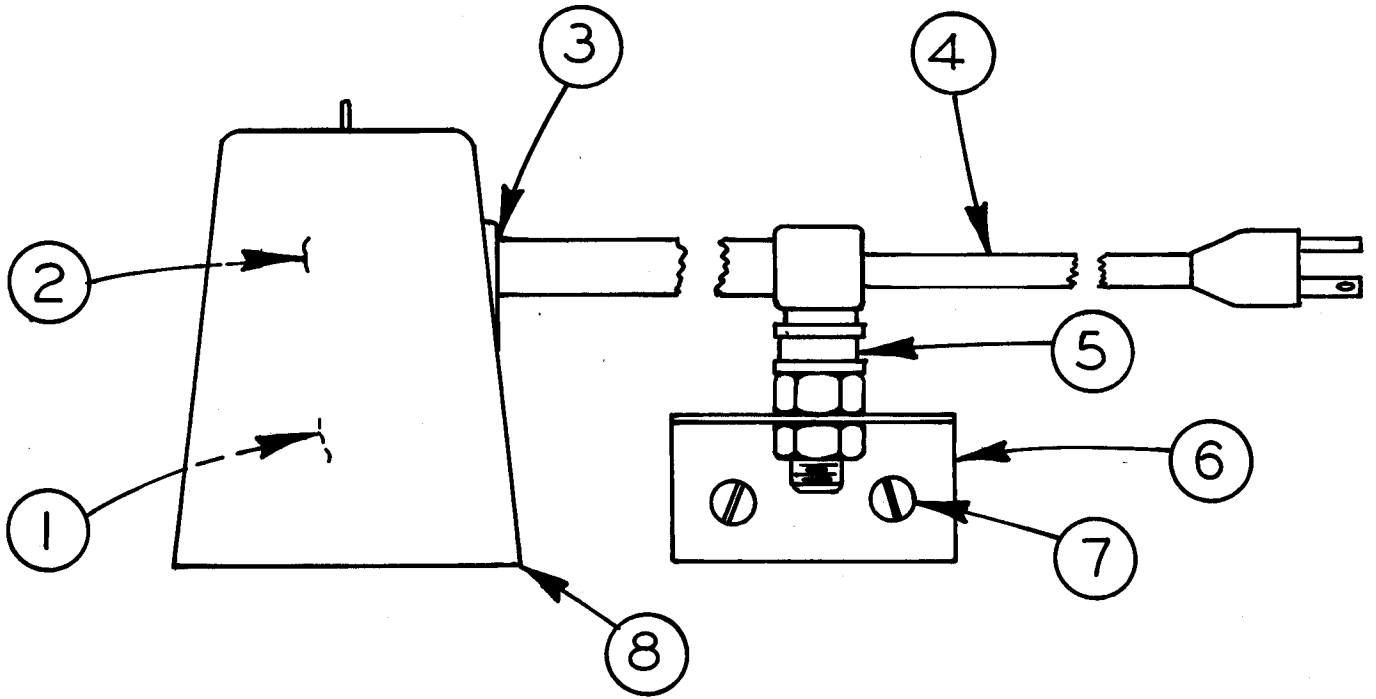
HYDRAULIC SUB-ASSEMBLY

INDEX NO.	PART NO.	DESCRIPTION	UNITS PER ASS'Y
Ref.	402771	Hydraulic Sub-Assembly	
1	122120	. Solenoid Valve 120 V , 60 Cy. . Sol. #2	Use
	122120	. Solenoid Valve 110 V , 50 Cy. . Sol. #2	One
2	35-2456	. Reducer Bushing	2
3	14-14528	. Close Nipple	5
4	26275	. Bracket Assembly	1
5	14-03507	. Nipple	2
6	102245	. Check Valve	1
7	35-847	. Service Tee	3
8	122110	. Solenoid Valve 120 V , 60 Cy. . Sol. #3	Use
	122113	. Solenoid Valve 110 V , 50 Cy. . Sol. #3	One
9	2186	. Pipe Cross	1
10	15858	. 90° Male Elbow	3
11	119401	. Solenoid Valve 115 V , 60 Cy. . Sol. #1	Use
	119402	. Solenoid Valve 110 V , 50 Cy. . Sol. #1	One
12	3818	. Coupling	1
13	35-317	. Male Branch Tee	1
14	35-3521	. Male Connector	1
15	5-04612	. Pipe Plug	1

NOTE: Following Items Not Shown

Stock	. Wire Markers (Brady Type No's 2, 7, 8,)	AR
Stk.#519	. Sealite Conduit 3/8	AR
Stk.#734	. Red Wire (#14 Stranded)	AR
103144-B	. Butt Wire Connector	AR
14483	. Sealite Connector	AR

REVISIONS
S.W.3-8-68
S.W.8-19-69



NOTE: USED ON ALL
 1,2,3,2H , D & C-12
 MODELS SINCE 1964

LAMP ASSEMBLY

PRINTED IN U.S.A.

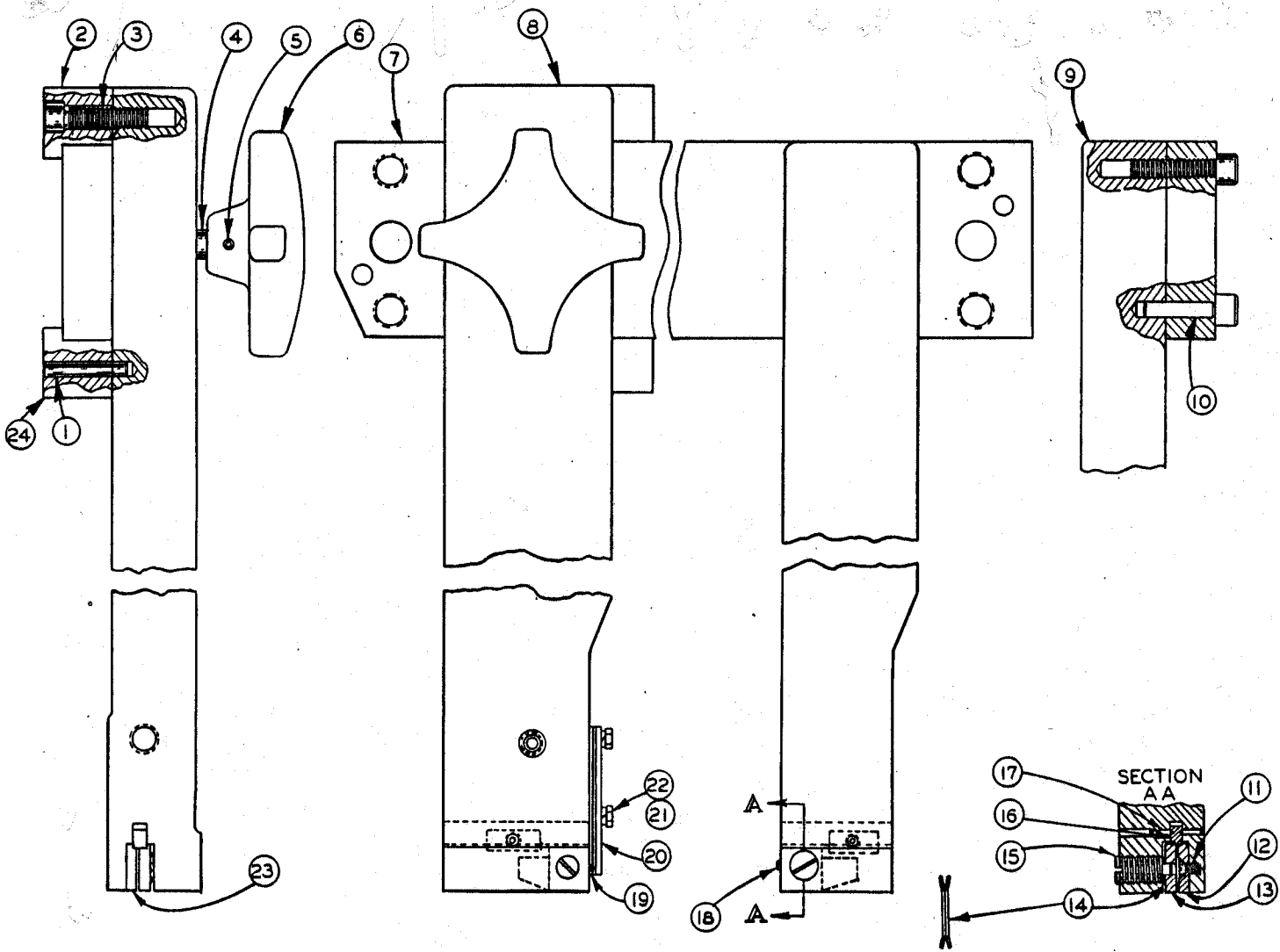
C-8-8 CM-8-31 PS-8-103 TF-4-100 F9-6.1 Z-7-61

CODE NO. C-8-8
 CM-8-31
 Z-7-61
 PS-8-103
 TF-4-100
 F9-6.1

LAMP ASSEMBLY

INDEX NO.	PART NO.	DESCRIPTION	UNITS PER ASS'Y
Ref.		Lamp Assembly	
1	Comm.	. Bulb 75 W. or Less	1
2	101432-E	. Socket, Lamp	1
3	101432-G	. Grommet	1
4	101432-B	. Cord and Plug Assembly	1
5	101432-F	. Mount	1
6	101432-A	. Bracket	1
7	198883	. Screw, Rd. Hd. Mach. #10-24NC x 1/4.	2
8	101432-C	. Shade, Lamp (Plastic)	1

NEW DRG. 1-5-68
REVISIONS
S.W. 5-25-70
S.W. 5-11-72
S.W. 12-10-76

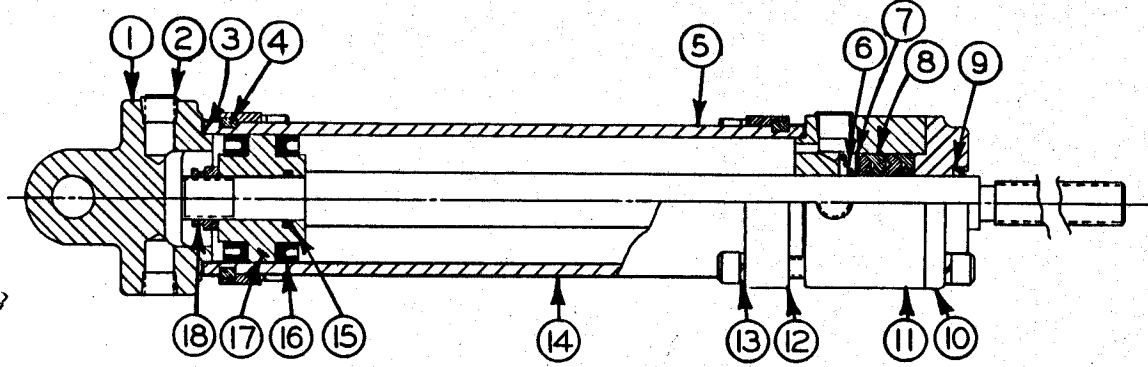


MODEL	FIRST MACH.	LAST MACH.
C-9A	261-68101	281-72149
C-9	260-68101	260-71306
C-9V	296-70101	296-76325
C-9AV	297-70101	297-76194

SAW GUIDE ARM ASSEMBLY

SAW GUIDE ARM ASSEMBLY

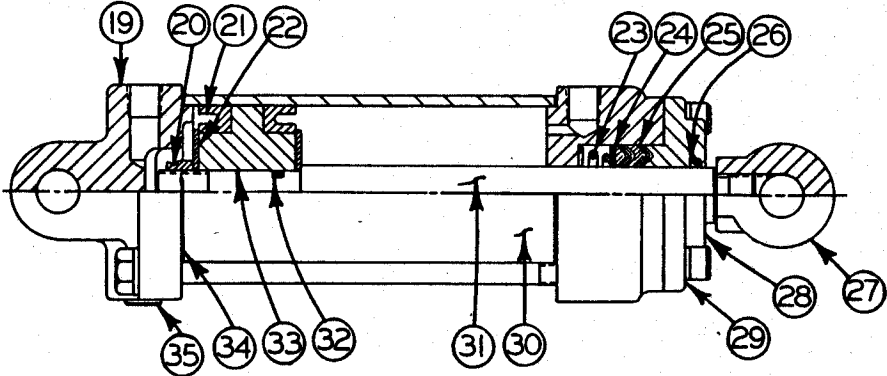
INDEX NO.	PART NO.	DESCRIPTION	UNITS PER ASS'Y
Ref.	59218	Saw Guide Arm Ass'y	
1	8786	. Dowel Pin.....	4
2	125225	. Upper Slide Block.....	1
3	Comm.	. Scr., Soc. Hd. Cap 3/8-16NC x 1 1/2 ...	4
4	105303	. Stud.....	1
5	4260	. Roll Pin.....	1
6	11621	. Handwheel.....	1
7	300587	. Mounting Bar.....	1
8	500505	. L. H. Arm.....	1
9	59214	. R. H. Arm.....	1
10	35-328	. Dowel Pin.....	2
11	Comm.	. Scr. Flat Hd. Mach. #10-24NC x 3/8....	2
12	107936	. R. H. Rear Insert.....	1
13	107938	. Front Insert.....	2
14	105263	. Belleville Washer.....	4
15	105257	. Adjusting Screw.....	2
16	110671	. Back-Up Insert.....	2
17	Comm.	. Screw, Soc. Hd. Set #10-24 x 5/16 Cone Pt.	4
18	Comm.	. Scr., Soc. Hd. Set #8-32NC x 1/4.....	2
19	109082	. Gasket.....	2
20	109081	. Cover.....	1
21	Comm.	. Washer, Lock #10 Std.....	4
22	Comm.	. Scr., Hex. Hd. Cap #10-24NC x 3/8....	4
23	107937	. L. H. Rear Insert.....	1
24	125224	. Lower Slide Block.....	1



#27570
SPEED CHANGE CYLINDER ASSEMBLY

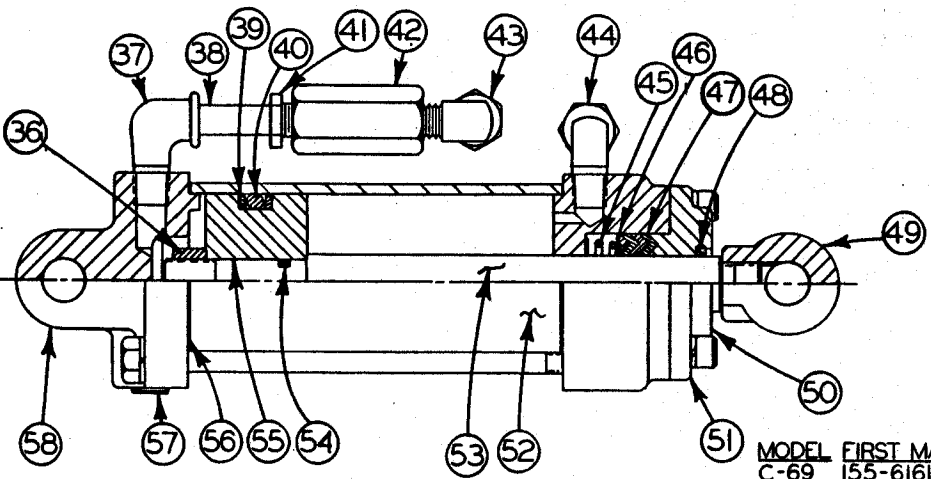
MODEL	FIRST MACH.	LAST MACH.
C-67	155-59101	155-61301
C-68	156-59101	156-61418
C-167	173-60101	173-60201
C-168	160-60101	160-60200

REVISIONS
S.C.L. 5-23-74



#30190
SPEED CHANGE CYLINDER ASSEMBLY

MODEL	FIRST MACH.	LAST MACH.
C-69	155-60400	155-61614
C-70	156-60600	156-61850
C-169	173-60300	173-61503
C-170	160-60300	160-61502

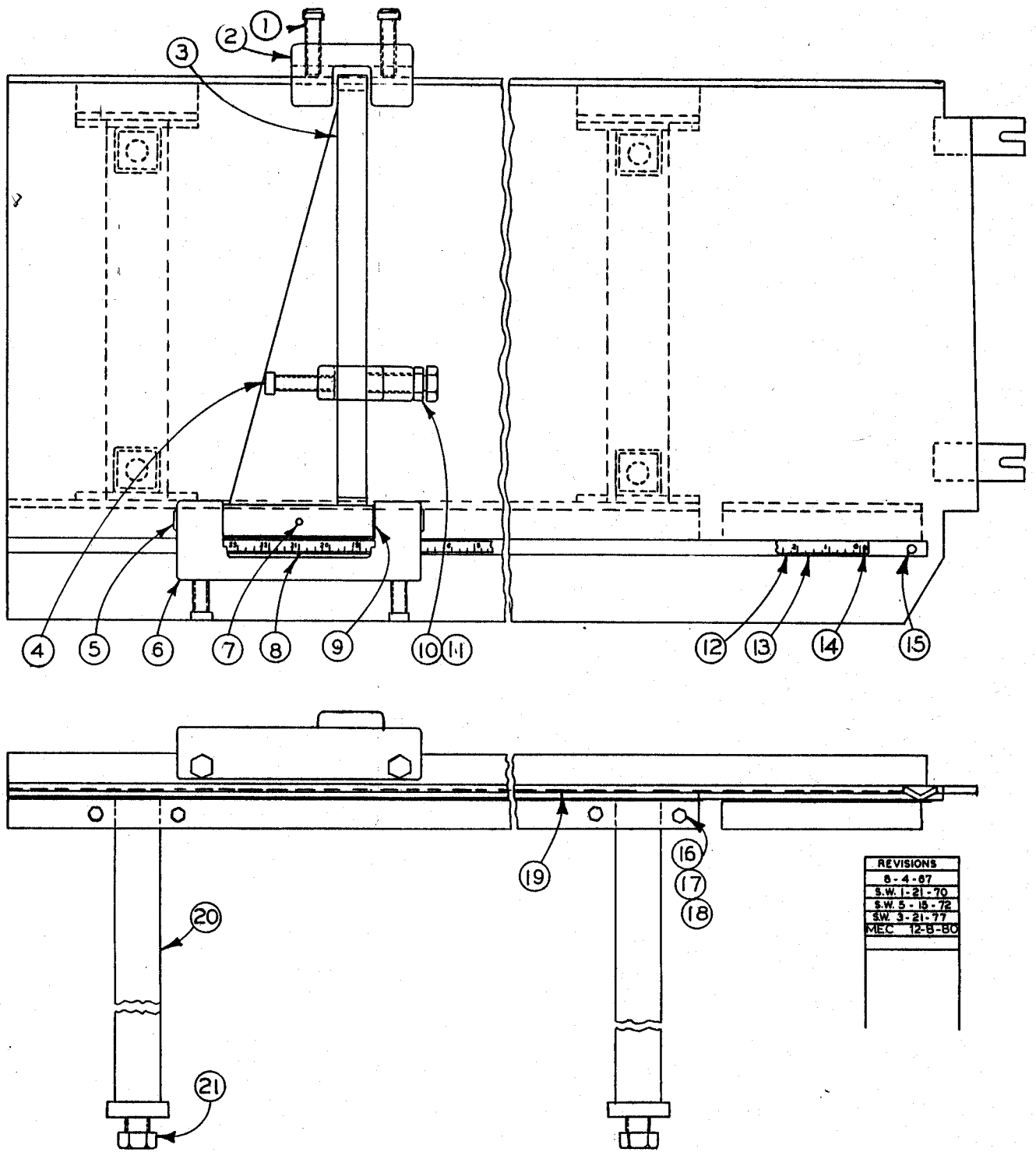


#30190
SPEED CHANGE CYLINDER ASSEMBLY

MODEL	FIRST MACH.	LAST MACH.
C-69	155-61615	155-721269
C-70	156-61851	156-732648
C-169	173-61504	173-72582
C-170	160-61502	160-72602
C-270	217-64101	217-70139
C-9V	296-70101	296-76325
C-9AV	297-70101	297-76194

SPEED CHANGE CYLINDERS

INDEX NO.	PART NO.	DESCRIPTION	UNITS PER ASS'Y
Ref.	27570	Speed Change Cylinder Assembly	
1	26117	. Backhead	1
2	14-115158	. Skt. Pipe Plug	2
3	35-463A	. Cylinder Gasket	2
4	35-466	. Snap Ring	4
5	16695	. Cylinder	1
6	12720	. Spring	1
7	12968	. Backup Washer	1
8	12745	. V-Packing	1
9	7069	. Scraper Ring	1
10	13402	. End Cap	1
11	26116	. Front Head	1
12	35-465	. Cylinder Collar	2
13	3559	. Washer-Lock	12
14	27734	. Piston Rod	1
15	35-8727	. "O"-Ring	1
16	12743	. "U"-Cup	2
17	12341	. Piston	1
18	12776	. Self-Locknut	1
Ref.	30190	Speed Change Cylinder Assembly	
19	30192	. End Cap	1
20	12776	. Lock Nut	1
21	103404	. "U"-Cup	2
22	103176	. Washer	2
23	103173	. Spring	1
24	17454	. Backup Washer	1
25	103174	. "V"-Packing	1
26	7069	. Scraper Ring	1
27	17456	. Rod End	1
28	103175	. End Cap	1
29	30191	. Cylinder Head	1
30	17441	. Cylinder	1
31	17339	. Rod	1
32	35-9176	. "O"-Ring	1
33	103172	. Piston	1
34	35-8915	. Gasket	2
35	14-115158	. Pipe Plug	1
Ref.	30190	Speed Change Cylinder Ass'y.	
36	12776	. Self-Locknut	1
37	5-04520	. St. Elbow	1
38	14-605	. Long Nipple	1
39	8983	. Backup Ring	2
40	35-8873	. "O"-Ring	1
41	35-2456	. Reducer Bushing	1
42	8084-6	. Orifice	1
43	12086	. 90° Male Elbow	1
44	14-115194	. 90° Male Elbow	1
45	103173	. Spring	1
46	17454	. Backup Washer	1
47	109884	. Homo. Chevron Packing Ring	2
	109883	. Fab. Chevron Packing Ring	1
	108986	. Shim	AR
48	7069	. Scraper Ring	1
49	17456	. Rod End	1
50	103175	. End Cap	1
51	30191	. Cylinder Head	1
52	17441	. Cylinder	1
53	17339	. Rod	1
54	35-9176	. "O"-Ring	1
55	104475	. Piston	1
56	35-8915	. Gasket	2
57	14-115158	. Pipe Plug	1
58	30192	. End Cap	1



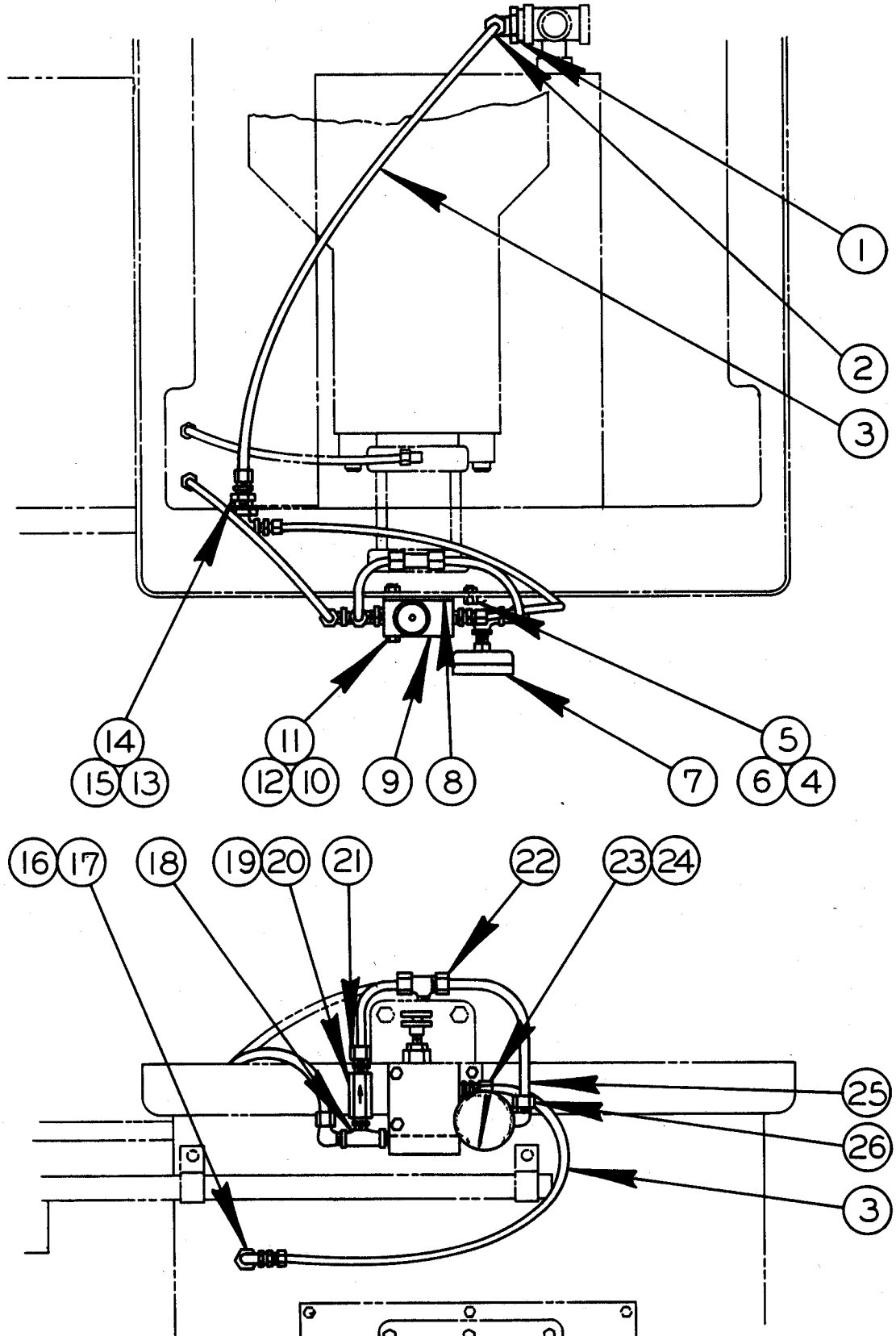
36" STOCK TRAY WITH WORK STOP

MODEL	FIRST MACH	LAST MACH
C-7	226-64243	226-66567
C-8	223-64101	223-68470
C-8A	224-64101	224-66170
C-9	260-68101	260-71306
C-9V	296-70101	296-76325
C-122M	371-77101	371-80179

36" STOCK TRAY WITH WORK STOP

INDEX NO.	PART NO.	DESCRIPTION	UNITS PER ASS'Y
Ref.	59033	36" Stocktray with work stop (C-9 & C-9V)	
Ref.	56801	36" Stocktray with work stop (C-8, C-7, & C-8A)	
1	Comm.	. Hex. Hd. Cap Scr. 1/2-13NC x 2.....	5
2	33377	. Clamp.....	1
3	48284	. Arm Weldment.....	1
4	106772	. Stop.....	1
5	109913	. Pin.....	1
6	48280	. Clamp.....	1
7	4233	. Roll Pin.....	1
8	4204	. Roll Pin.....	1
9	105700	. Shim.....	A.R.
10	Comm.	. Jam Nut 5/8-11NC.....	1
11	Comm.	. Hex. Hd. Cap Scr. 5/8-11NC x 2 Lg.....	1
12	48267	. Rule.....	1
13	108927	. Rail.....	1
14	Comm.	. Drive Scr. #2 Type "U" x 3/16 Lg.....	5
15	16352	. Dowel Pin.....	2
16	Comm.	. Hex. Hd. Cap Scr. 5/16-18NC x 1 Lg.....	8
17	Comm.	. Lockwasher 5/16 Std.....	8
18	Comm.	. Hex. Nut 5/16-18NC.....	8
19	48053	. Tray Weldment (Used on C-7, C-8 & C-8A)...	Use
	400592	. Tray Weldment (Used on C-9 & C-9V).....	One
20	48009	. Leg Weldment.....	2
21	Comm.	. Screw, Hex. Hd. Cap 3/4-10NC x 1/2.....	4

NEW DRG.
S.C.L. 12-5-73
REVISIONS
SW. 3-21-77
MC 12-8-80



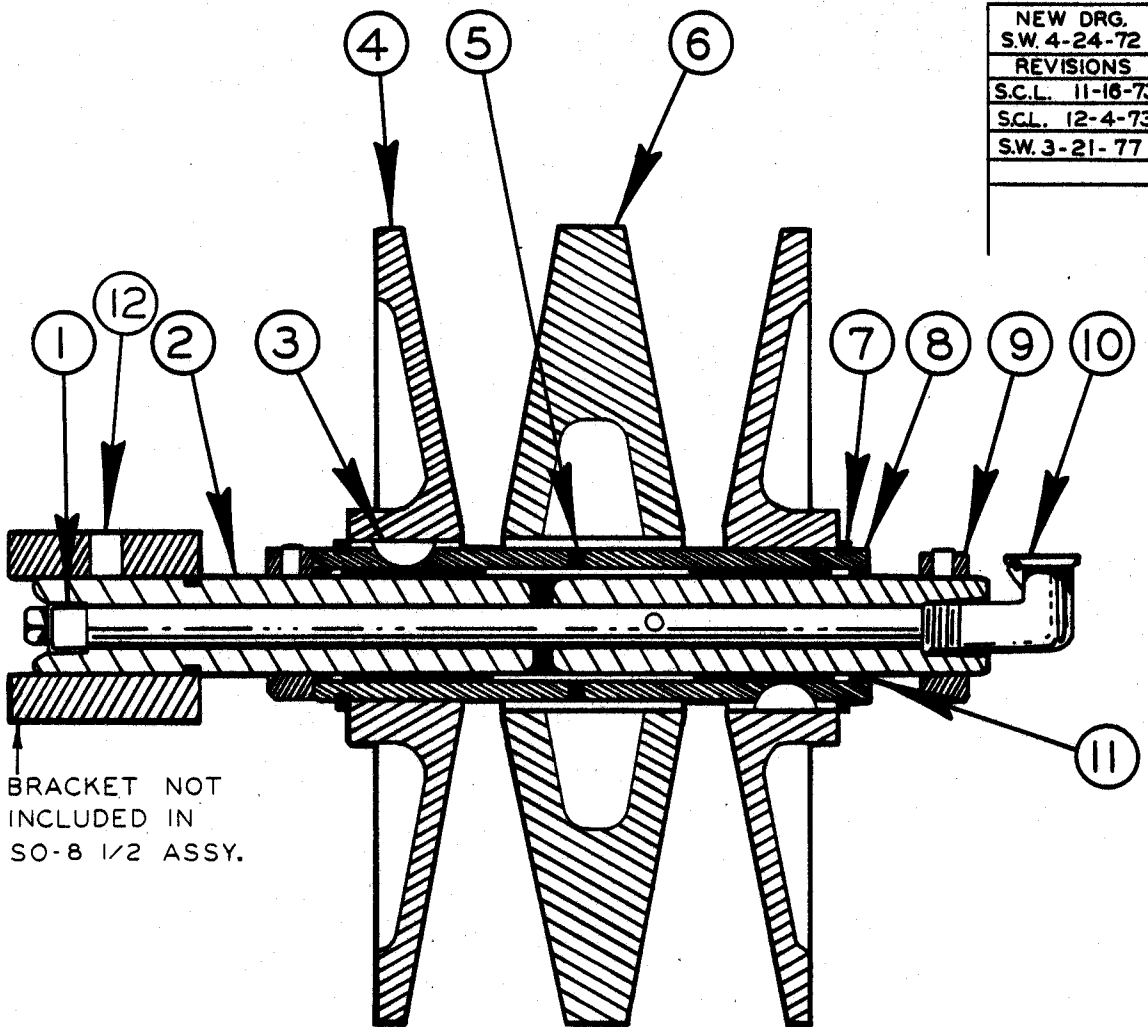
MODEL FIRST MACH. LAST MACH.
 C-9V 296-71101 296-76325
 C-1212M 371-77101 371-80179

VARIABLE VISE PRESSURE ATTACHMENT

VARIABLE VISE PRESSURE ATTACHMENT

INDEX NO.	CATALOG NO.	DESCRIPTION	UNITS PER ASS'Y
REF.	503362	Variable Vise Pressure Attachment	
1	114-035215	. Reducer Bushing	1
2	090-120866	. 90° Male Elbow	1
3	090-002106	. Nylon Tubing 1/4 O.D.	A.R.
4	091-980011	. Screw, Hex. Hd. Cap #10-24NC x 1/2	1
5	091-993196	. Washer, Lock #10 Std.	1
6	091-991117	. Nut, Hex. #10-24NC	1
7	090-120809	. Pressure Gauge	1
8	091-187583	. Adapter Plate	1
9	091-147413	. Pressure Reducing Valve	1
10	091-980334	. Screw, Hex. Hd. Cap 5/16-18NC x 2	2
11	091-993238	. Washer, Lock 5/16 Std.	2
12	091-991224	. Nut, Hex. 5/16-18NC	2
13	091-084483	. Coupling	1
14	091-993287	. Washer, Lock 5/8 Std.	1
15	091-991356	. Nut, Hex. 5/8-11NC	1
16	091-341289	. Male Connector	2
17	105-045207	. 90° Street Elbow	1
18	135-008472	. Service Tee	2
19	091-022459	. Check Valve	1
20	114-035074	. Close Nipple	1
21	135-035210	. Male Connector	1
22	135-003176	. Male Branch Tee	1
23	105-115174	. Reducer Bushing	2
24	090-092735	. Male Connector	1
25	090-002114	. Nylon Tubing 3/8 O.D.	A.R.
26	135-135226	. 90° Male Elbow	2

NEW DRG.
S.W. 4-24-72
REVISIONS
S.C.L. 11-16-73
S.C.L. 12-4-73
S.W. 3-21-77



BRACKET NOT INCLUDED IN SO-8 1/2 ASSY.

8 1/2 VARIABLE PULLEY ASSEMBLY

MODEL	FIRST MACH.	LAST MACH.
16-2	74-54101	} TO END
16-3	50-53101	
36-2	125-58101	
36-3	37-51101	
26-2	54-53101	
60-2	56-53101	
C-57	96-54101	
C-58	97-54101	
1613-2	150-59101	
3613-2	151-59101	
1612-3	152-59101	
3612-3	153-59101	
2612-1	172-60101	172-68229
2612-2H	206-62101	} 269-68102
2612-H	269-68101	
2612-1	285-68101	
2612-H	284-68101	
2013	301-71101	301-74165
2012-A	320-72101	320-74333
16-2A	75-54101	75-58221
36-2A	85-54101	85-58178
C-9V	296-70101	296-76325
C-9AV	297-70101	297-76194
2013-0	321-72101	321-74357
2013-1	388-74101	} 330-74111
2013-10	339-74101	
2012-1A	340-74101	
2012-1AT	341-74101	
2012-AT	330-74101	
2012-1H	348-75101	
2012-1H3	354-78101	
3612-1H3	358-76101	
C-1212M	371-77101	
C-1212A	372-77101	

CODE NO. C-5-34

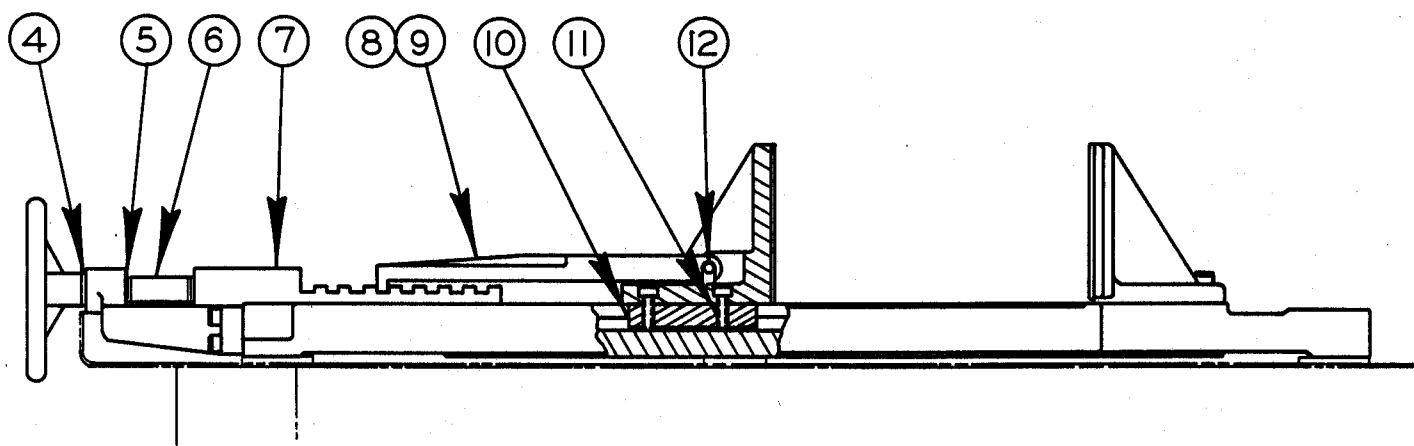
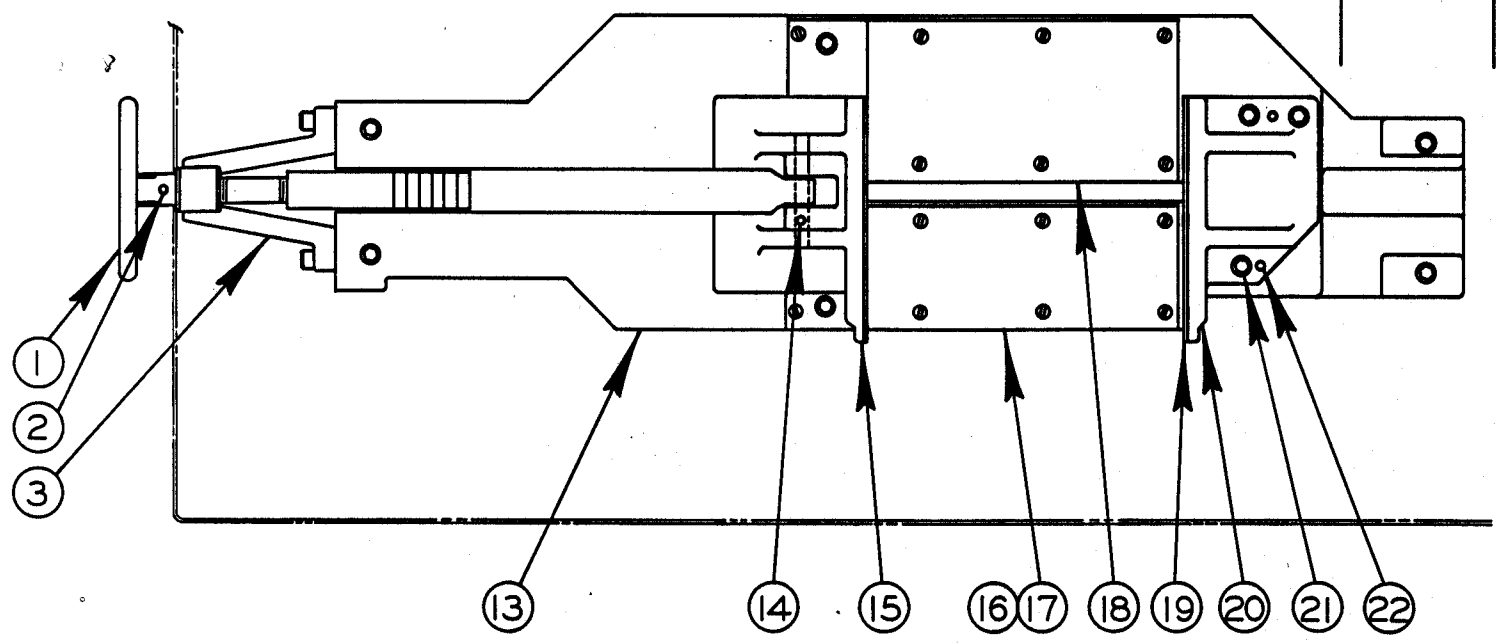
CM-5-12

PS-4-35

81/2" VARIABLE ASSEMBLY

INDEX NO. REF.	CATALOG NO.	DESCRIPTION	UNITS PER ASS'Y
1	135-093359	Variable Assembly	
1	091-227488	. Pipe Plug	1
2	135-093367	. Shaft	1
3	105-046023	. Key	2
4	135-093375	. End Sheave	2
5	091-007013	. Wick	2
6	090-202466	. Center Sheave Assembly	1
7	135-003275	. Retaining Ring	2
8	135-093391	. Sleeve Assembly	1
9	135-008126	. Collar	1
10	111-055125	. Oiler	1
11	135-008985	. Washer	2
12	091-984245	. Screw, Soc. Set 1/4-20NC x 3/8	1

NEW DRG.
S.W. 5-22-72
REVISIONS
S.C.L. 11-29-73
SW 3-21-77
MEC 12-9-80



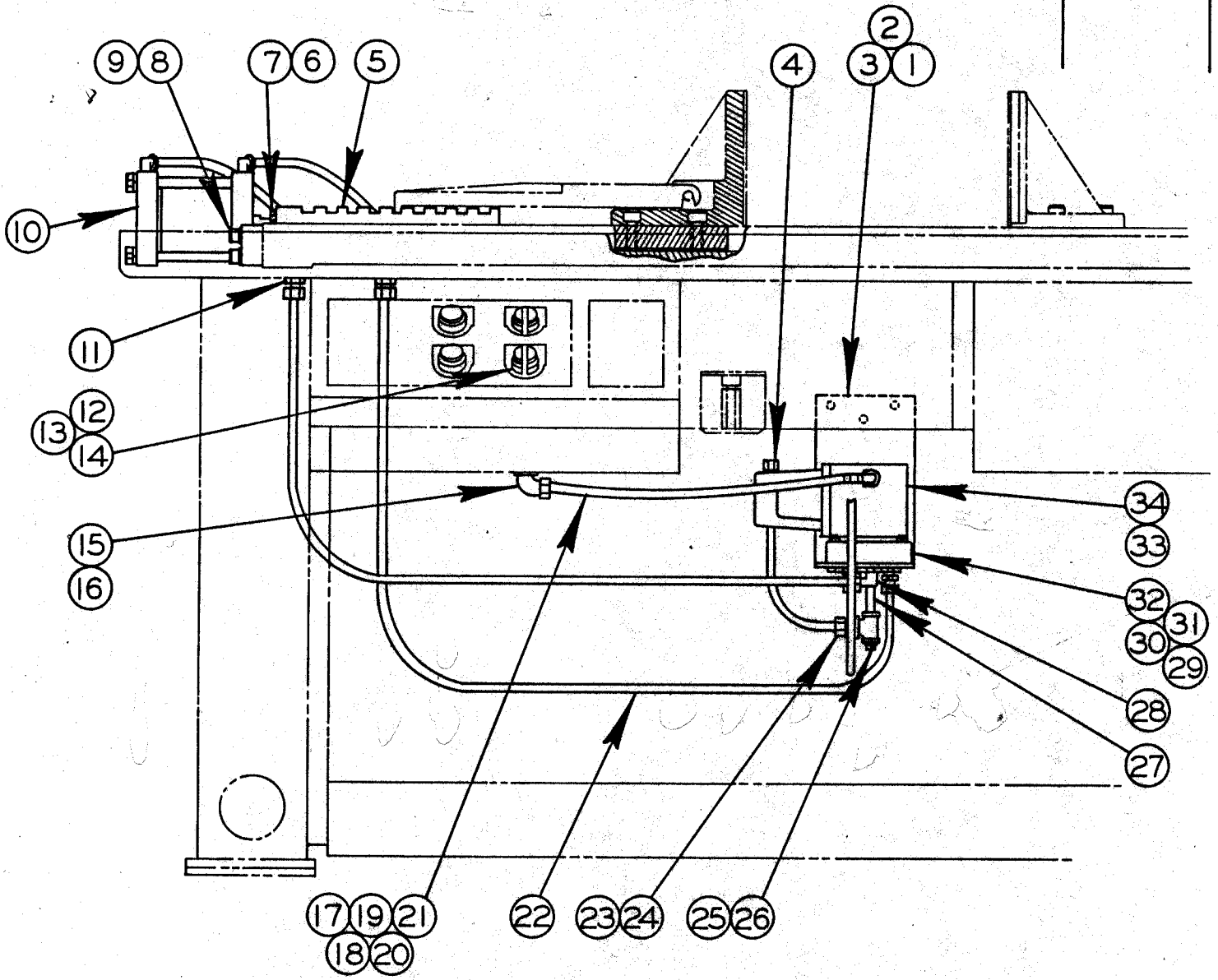
MODEL	FIRST MACH.	LAST MACH.
C-9V	296-70101	296-76101
C-1212M	371-77101	371-80179

WISE & BASE ASSEMBLY

VICE BASE ASSEMBLY

INDEX NO. REF.	CATALOG NO.	DESCRIPTION	UNITS PER ASS'Y
	095-009213	Vise Base Assembly	
1	090-316332	. Handwheel	1
2	090-042615	. Roll Pin	1
3	094-026036	. Bracket.....	1
4	091-038091	. Spacer	1
5	091-037333	. Bearing	1
6	091-232819	. Clamp Screw	1
7	094-026044	. Rack	1
8	090-274721	. Pawl (13-5/16)	1
9	090-274705	. Pawl (21-5/16)	1
10	091-244665	. Key	1
11	091-168161	. Screw, Soc. Hd. Cap 1/2-13NC x 1 (Nylloc)	2
12	090-148412	. Pin	1
13	090-590175	. Vise Base	1
14	091-984229	. Screw, Soc. Set 1/4-20NC x 1/4	1
15	094-042306	. Movable Jaw	1
16	090-369778	. Front Wear Plate	1
17	090-150350	. Screw, Flat Hd. Mach. 1/4-20NC x 5/8	28
18	090-369763	. Rear Wear Plate	1
19	090-178757	. Wear Strip	2
20	090-450115	. Fixed Jaw	1
21	091-982959	. Screw, Soc. Hd. Cap 1/2-13NC x 11/2	7
22	114-004732	. Dowel Pin	2

NEW DRG.
S.W 5-23-72
REVISIONS



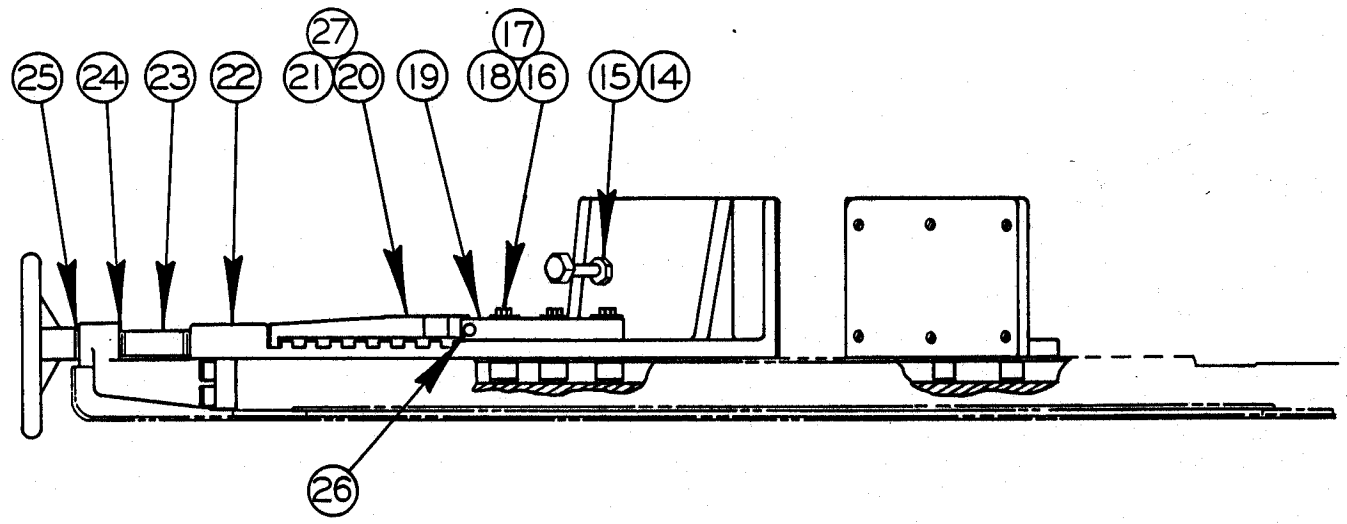
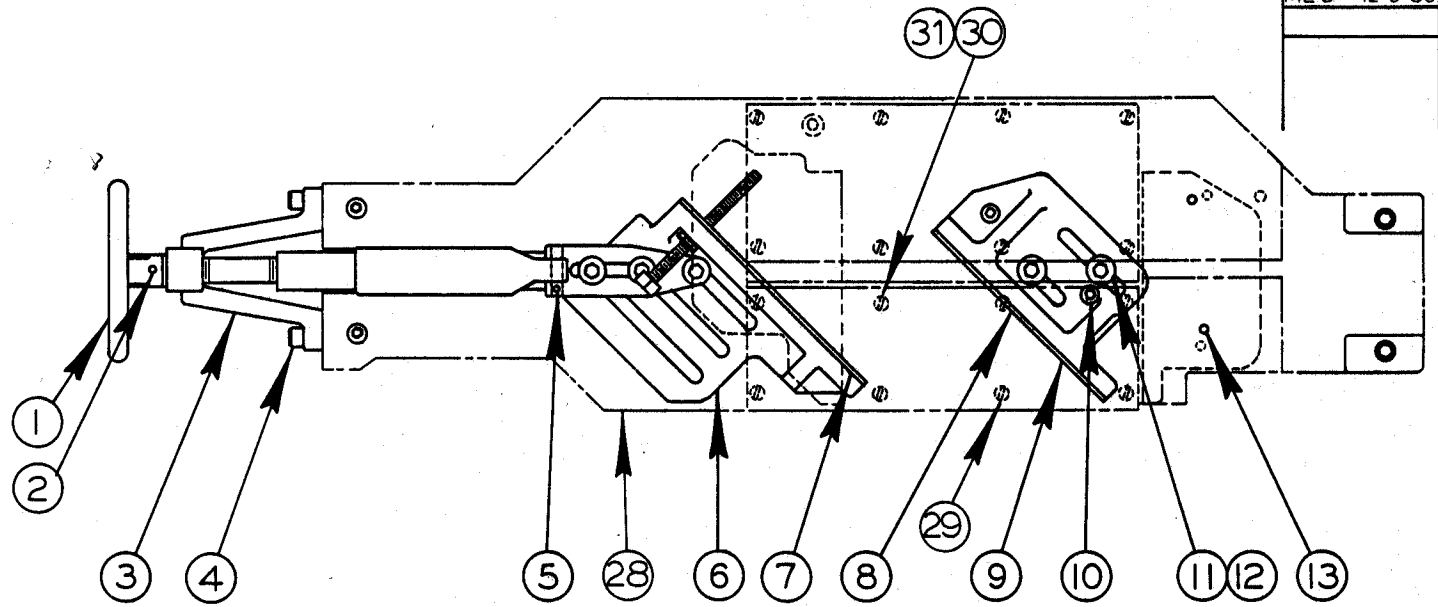
MODEL FIRST MACH. LAST MACH.
 C-9V 296-70101 296-76325

WISE BASE W/HYDRAULIC WISE ATTACHMENT

HYDRAULIC VISE ASSEMBLY

INDEX NO.	PART NO.	DESCRIPTION	UNITS PER ASSY
Ref.	500904	Hydraulic Vise Assembly	
1	39815	. Bracket.....	1
2	Comm.	. Screw, Hex. Hd. Cap 1/4-28 N.F. x 1/2..	3
3	Comm.	. Washer, Lock 1/4 Std.....	3
4	9522	. 45° Male Elbow.....	1
5	400651	. Rack.....	1
6	117348	. Bushing.....	1
7	117692	. Screw, Soc. Hd. Shoulder.....	1
8	Comm.	. Screw, Soc. Hd. Cap 1/2-13NC x 1 3/4 ...	4
9	Comm.	. Washer, Lock 1/2 Std.....	4
10	400553	. Cylinder Assembly (See Detail).....	1
11	108413	. Bulk Head Union.....	2
12	108928	. Legend Plate.....	1
13	15245	. Selector Switch.....	1
14	104821	. Contact Block.....	1
15	19543	. Bond Nut.....	1
16	8438	. 90° Sealtite Connector Ass'y.....	1
17	14504	. 90° Sealtite Connector.....	1
18	Stk #520	. Sealtite Conduit.....	1
19	103144-B	. Wire Connector.....	4
20	Stk.	. Wire Markers (Brady Type).....	A.R.
21	Stk #734	. Wire #14 Red.....	A.R.
22	Stk #211	. Nylon Tubing 3/8 O.D.....	A.R.
23	35-3521	. Male Connector.....	3
24	35-3506	. Reducer Bushing.....	4
25	35-2474	. Tee.....	1
26	5-04612	. Pipe Plug.....	1
27	35-985	. Nipple.....	1
28	35-3522	. 90° Male Elbow.....	3
29	109152	. Sub-Plate Ass'y.....	1
30	Comm.	. Screw, Soc. Hd. Cap 3/8-16NC x 1 1/2 ...	4
31	Comm.	. Washer, Lock 3/8 Std.....	4
32	Comm.	. Nut, Hex. 3/8-16NC.....	4
33	51067	. VS8M-1A-A-10 (120V. 60 Cycle).....	Use
34	116891	. VS8M-1A-A-16 (110V. 50 Cycle).....	One

NEW DRG.
S.W. 5-23-72
REVISIONS
S.C.L. 11-30-73
SW. 3-21-77
MEC 12-9-80



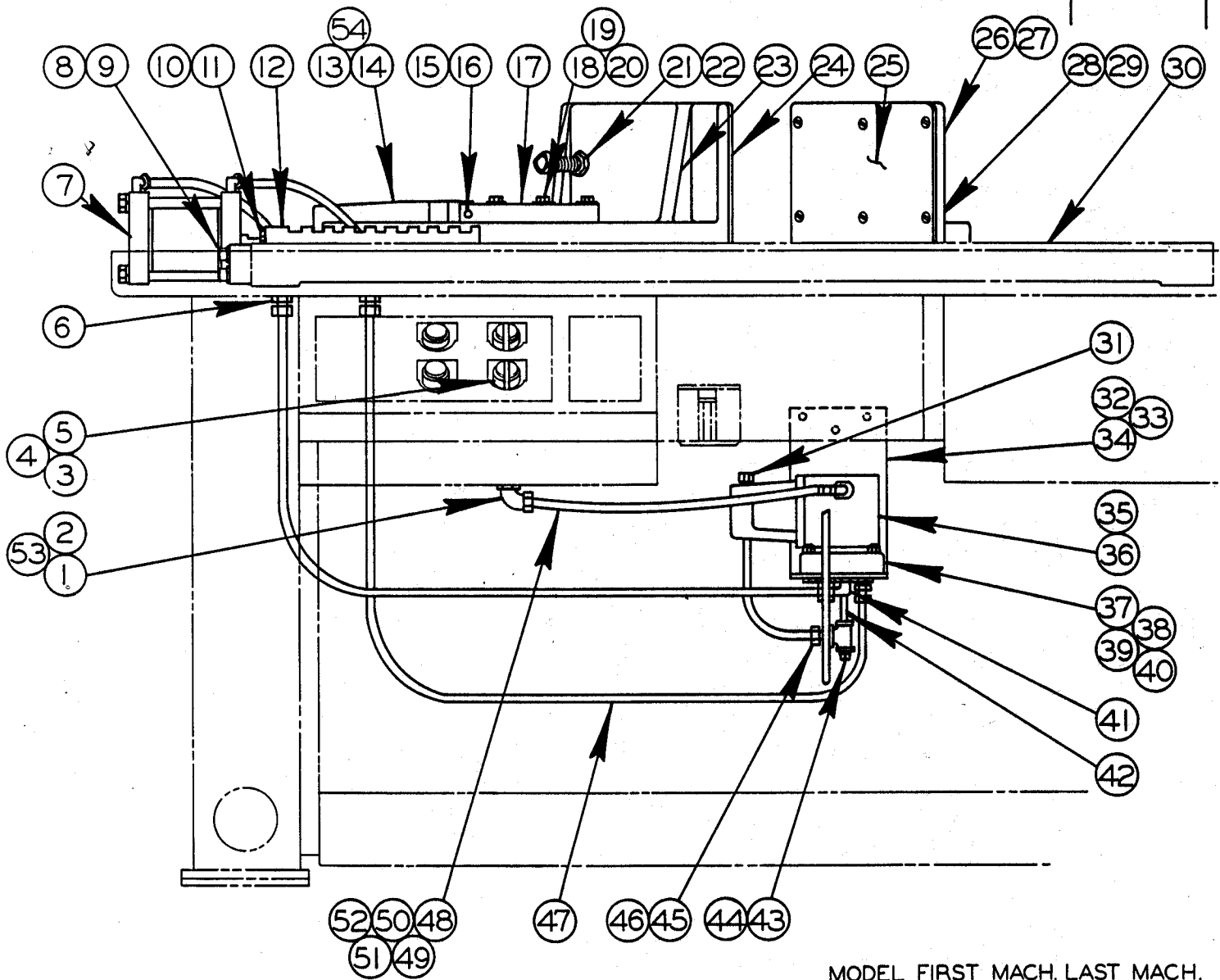
MODEL	FIRST MACH.	LAST MACH.
C-9V	296-70101	296-76325
C-1212M	371-77101	371-80179

WISE BASE W/SWIVEL JAWS ATTACHMENT

ANGLE VISE ASSEMBLY

INDEX NO.	CATALOG NO.	DESCRIPTION	UNITS PER ASS'Y
REF.	095-009221	Angle Vise Assembly	
1	090-316332	. Handwheel	1
2	090-042615	. Roll Pin	1
3	094-026036	. Bracket	1
4	091-982959	. Screw, Soc. Hd. Cap, 1/2-13NC x 11/2	4
5	091-984229	. Screw, Soc. Set 1/4-20NC x 1/4	1
6	095-048724	. Vise Jaw	1
7	093-043651	. Wear Strip	1
8	095-048716	. Fixed Vise Jaw	1
9	093-048460	. Wear Strip	1
10	091-220269	. Drill Bushing	2
11	090-076944	. T-Nut	3
12	091-980680	. Screw, Hex. Hd. Cap 1/2-13NC x 13/4	3
13	091-314732	. Dowel Pin	2
14	090-116815	. Screw, Sq. Hd. Set	1
15	091-991406	. Nut, Hex. Jam 3/4-10NC	1
16	091-350777	. T-Nut	3
17	135-058287	. Washer	6
18	091-980722	. Screw, Hex. Hd. Cap 1/2-13NC x 23/4	3
19	090-231572	. Link	1
20	090-306515	. Pawl (17-5/16)	1
21	090-397787	. Pawl (8-1/2)	1
22	094-026044	. Rack	1
23	091-232819	. Clamp Screw	1
24	091-037333	. Bearing	1
25	091-038091	. Spacer	1
26	090-070079	. Pin	1

NEW DRG.
S.W. 5-25-72
REVISIONS
S.C.L. 11-30-73
SW. 3-21-77
M.E.C. 12-9-80

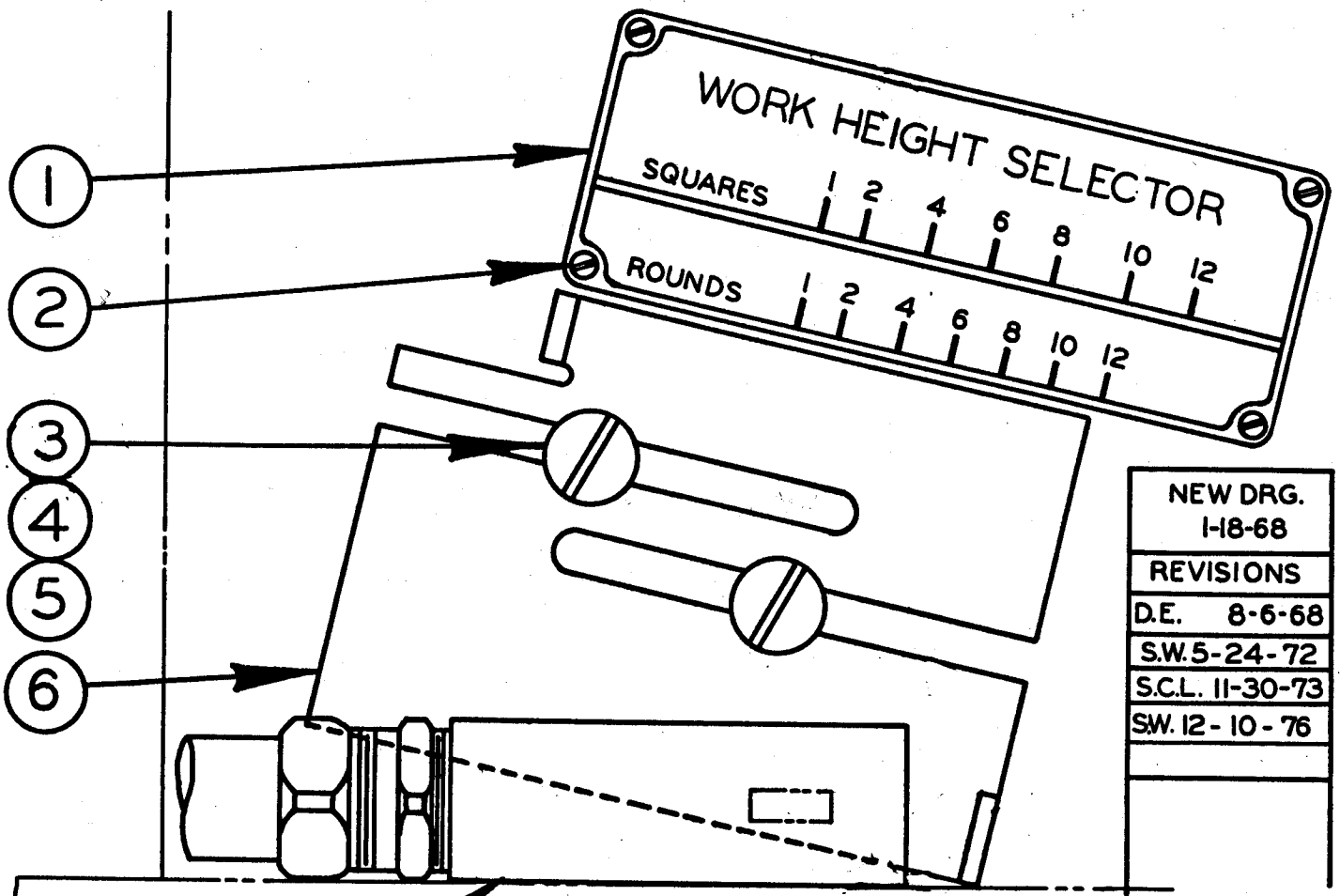


MODEL	FIRST MACH.	LAST MACH.
C-9V	296-70101	296-76325
C-1212M	371-77101	371-80179

WISE BASE W/SWIVEL JAWS & HYDRAULIC WISE CYLINDER

HYDRAULIC ANGLE VISE ASSEMBLY

INDEX NO.	CATALOG NO.	DESCRIPTION	UNITS PER ASS'Y
REF.	095-009247	Hydraulic Angle Vise Assembly	
1	090-144114	. Flange Washer	2
2	090-195439	. Bond Nut	1
3	090-152455	. Selector Switch	1
4	091-089284	. Legend Plate	1
5	091-048215	. Contact Block	1
6	091-084137	. Bulkhead Union	2
7	094-005535	. Cylinder Assembly (See Detail)	1
8	091-982967	. Screw, Soc. Hd. Cap 1/2-13NC x 13/4"	4
9	091-993279	. Washer, Lock 1/2" Std.	4
10	091-173484	. Bushing	1
11	091-176925	. Screw, Soc. Hd. Shoulder	1
12	094-006517	. Rack	1
13	090-306515	. Pawl (17-15/16)	USE
14	090-392739	. Pawl (6-1/2)	ONE
15	090-070079	. Pin	1
16	091-984229	. Screw, Soc. Set 1/4-20NC x 1/4	1
17	090-231572	. Link	1
18	091-350777	. T-Nut	3
19	135-058287	. Washer	6
20	091-980722	. Screw, Hex. Hd. Cap 1/2-13NC x 23/4"	3
21	090-116815	. Screw, Sq. Hd. Set	1
22	091-991406	. Nut, Hex. Jam 3/4-10NC	1
23	095-048724	. Vise Jaw	1
24	093-043651	. Wear Plate	1
25	093-048460	. Wear Strip	1
26	095-048716	. Fixed Jaw	1
27	091-220269	. Drill Bushing	2
28	090-076944	. T-Nut	3
29	091-980680	. Screw, Hex. Hd. Cap, 1/2-13NC x 13/4"	2
30	091-314732	. Dowel Pin	2
31	090-095225	. 45° Male Elbow	1
32	090-398157	. Bracket	1
33	091-980060	. Screw, Hex. Hd. Cap 1/4-20NC x 1/2"	3
34	091-993212	. Washer, Lock 1/4" Std.	3
35	091-320309	. VS8M-1A-A-10 (120 V. 60 Cycle)	1
36	091-982462	. Screw, Soc. Hd. Cap 1/4-20NC x 13/4"	4
37	091-091520	. Sub-Plate Assembly	1
38	091-982819	. Screw, Soc. Hd. Cap 3/8-16NC x 11/2"	4
39	091-991265	. Nut, Hex. 3/8-16NC	4
40	091-993329	. Washer, Lock 3/8 Std.	4
41	135-035228	. 90° Male Elbow	3
42	135-009850	. Nipple	1
43	135-024743	. Tee	1
44	105-046122	. Pipe Plug	1
45	135-035210	. Male Connector	3
46	135-035061	. Reducer Bushing	4
47	090-002114	. Nylon Tubing 3/8 O.D.	A.R.
48	090-005208	. Sealrite Conduit 1/2"	A.R.
49	090-145046	. 90° Sealrite Connector	2
50	091-323691	. Wire Connector	4
51	090-007345	. Wire #14 Red	A.R.
52	090-005505	. Wire Markers (Brady Type)	A.R.
53	090-145053	. "O"-Ring	2



NEW DRG.	
I-18-68	
REVISIONS	
D.E.	8-6-68
S.W.	5-24-72
S.C.L.	11-30-73
SW.	12-10-76

- ①
- ②
- ③
- ④
- ⑤
- ⑥
- ⑦
- ⑧
- ⑨
- ⑩
- ⑪
- ⑫

MODEL	FIRST MACH.	LAST MACH.
C-9	260-68101	260-71306
C-9V	296-70101	296-76325

37514

WORK HEIGHT SELECTOR ATTACH.

WORK HEIGHT SELECTOR ATTACH.

INDEX NO.	PART NO.	DESCRIPTION	UNITS PER ASS'Y
Ref.	37514	Work Height Selector Attach.	
1	118505	. Escutcheon.....	1
2	Comm.	. Screw, Drive P.K. Type "U" #2 x 1/4.....	4
3	Comm.	. Screw, Truss Hd. Mach. 1/4-20NC x 1/2 (Nic Plated).....	2
4	Comm.	. Washer, Lock 1/4 Std (Cad. Plated).....	2
5	Comm.	. Washer 1/4 Std. (Nic. Plated).....	2
6	108812	. Contact Plate.....	1
7	101447	. Limit Switch.....	1
8	8437	. Sealtite Connector.....	1
9	14545	. Sealtite Connector.....	1
10	Stk #520	. Sealtite Conduit	1
11	Stk #734	. Wire, Red #14 Stranded	A.R.